



Parts

Reliance™ G5200 & G6200 Dispensers

920762
Rev G





REVIEW PRECAUTIONS BEFORE YOU BEGIN

Dispensers have both electricity and a hazardous, flammable, and potentially explosive liquid. Failure to follow the below precautions and the Warning and Caution instructions in this manual may result in serious injury or death. Read every tag attached to the dispenser before commencing installation. Follow all rules, codes, and laws that apply to your area and installation.

SAFETY PRECAUTIONS - INSTALLATION AND MAINTENANCE

Always make sure ALL power to the dispenser (motors and electronic head) is turned OFF before you open the dispenser cabinet for maintenance. Physically lock, restrict access to, or tag the circuit breakers you turn off when servicing the dispenser. If applicable, be sure to trip (close) the emergency valve(s) under the dispenser BEFORE beginning maintenance.

Make sure that you know how to turn OFF power to the dispenser and submersible pumps in an emergency. Have all leaks or defects repaired immediately.

EQUIPMENT PRECAUTIONS

Be sure to bleed all air from the product lines of remote dispensers and prime suction pumps before dispensing product, otherwise, damage to the equipment may occur. Always use the approved method for lifting the dispenser. Never lift by the nozzle boot, sheet metal, etc., otherwise equipment damage or personal injury may occur.

USE ONLY GENUINE PARTS

For product liability to be valid, no changes may be made to the equipment without the written consent of Wayne.

REGISTRATION OF SITE AND HOW TO CONTACT WAYNE

The equipment used at this site must be registered prior to contacting Wayne for warranty service. Sites can be pre-registered prior to installation by a Wayne Authorized Service Organization (ASO) via the on-line registration system OR through completing the Section 1 portion of the form, at the end of this manual, and sending it to Wayne (for non-ASOs). Pre-registration of a site helps to expedite warranty service in case it is needed. Please allow 2-3 days after receipt of the information for pre-registration. Final registration, which requires all of the information pertaining to the site including Start-Up date and equipment serial numbers, must be completed within 7 days of the completion of the Start-Up using the same aforementioned methods.

Trouble with the installation of this product should be referred to your Wayne® ASO. An ASO with a technician number can receive assistance by calling Wayne at Technical Support at:

1-800-926-3737

Customers, Installers or Distributors who are not an ASO, needing help with the operation or installation of this product, should contact the Wayne Help Desk at:

1-800-289-2963 OR support@wayne.com

Table of Contents

1. Locating Part Numbers & Ordering Parts	1
1.1 How to Locate Part Numbers	1
1.2 How to Order Parts.....	1
1.3 How to Contact Wayne.....	1
1.4 Model Number Descriptions	2
1.5 Models	4
2. Housing, Exterior Trim & Hose Handling	6
2.1 Dispenser Cabinet.....	6
2.2 Touch Up Paint (2 Oz. Bottle)	7
2.3 Door and Locks	8
2.4 Side Column Parts.....	9
2.5 Bezel Module.....	10
2.5.1 Product I.D. Decals (not shown)	10
2.5.2 G6200 Bezel Assembly.....	11
2.5.3 G5200 Bezel Assembly.....	11
2.5.4 Bezel Parts for the G6200 and G5200 Assembly	11
3. Register and Meter Module.....	12
4. Front-Load Nozzle Boot and Linkage	14
5. Register Reset Assembly.....	16
6. Meter Assembly	18
7. Suction Pump and Motor Module.....	20
8. Suction Pump Assembly (CPU)	22
9. Remote Dispenser Inlet.....	24
10. Discharge	26
11. Pulsers	28
11.1 G6200 Pulsar Assembly	28
11.2 G5200 Pulsar Assembly	30
12. Light Option.....	32
13. Internal Hose Retractor Option	33
14. Hose Mast Option	34
15. Healy Vapor Recovery Option.....	36

1 Locating Part Numbers & Ordering Parts

1.1 How to Locate Part Numbers

Step 1 Before looking up the part number, you should have the complete model number of the dispenser. The model number can be found on the serial number plate.

Step 2 Use the Model Designation Format table in the next section to interpret the base model and options contained in the model number.

Important: Some parts have multiple part number selections based upon the different dispenser options.

Step 3 Using the “Locating Information by Model Number” table, locate the module which you believe contains the desired part(s), and turn to that section. Note that most dispenser options have their own sections.

Step 4 Find the part needed on the module drawing and the corresponding item number. Read any notes on the drawing for assistance in locating the correct item and part number.

Step 5 Lookup the item number in the item listing on the facing page to find the part number and description.

Notes: Quantities are provided when the quantity of a major part differs between models. Quantities of all parts are not provided. The manual is designed to be a part reference tool for service parts replacement and not a complete bill of materials.

Some item numbers have multiple selections based upon the model options. If necessary, a table of acronyms and abbreviations can be found on the inside front cover to help interpret the description.

1.2 How to Order Parts

Parts should be ordered through Wayne Authorized Distributors. When ordering parts, always include the following information:

- Part Number
- Part Description
- Quantity Desired

1.3 How to Contact Wayne

Trouble with the installation of this product should be referred to your Wayne® ASO. An ASO with a technician number can receive assistance by calling Wayne at Technical Support at:

1-800-926-3737

Customers, Installers or Distributors who are not an ASO, needing help with the operation or installation of this product, should contact the Wayne Help Desk at:

1-800-289-2963 OR support@wayne.com

1.4 Model Number Descriptions

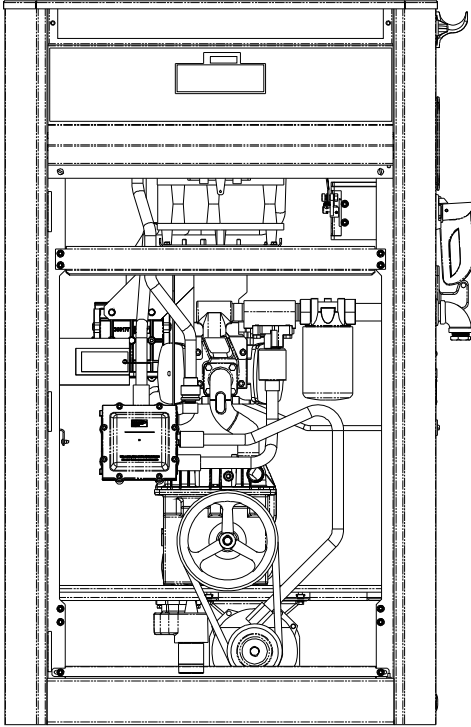
Prefix / Main Body / First Suffix / Second Suffix

A / BCDEF / ZZZZZZ / YYYYYYYY

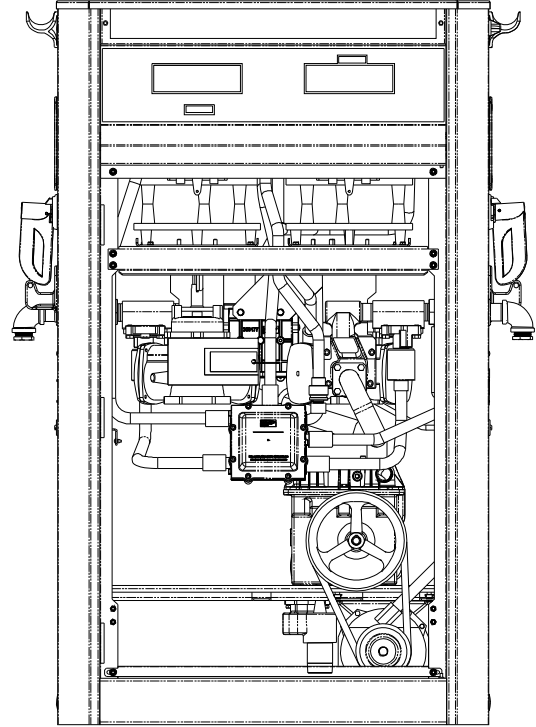
Prefix	A	Hydraulic Style	E3	Hydraulics Listed for E85 (Blank for standard fuels)
	/			
Main Body	B	Model Series	G	Global
	C	Registration Type	5	Reliance Mechanical Fleet-Pricing
			6	Reliance Mechanical Fleet-Volume Only
	D	Model Style	2	Column Style
	E	Flow Rate Capacity	0	Standard & High Capacity
	F	Hose & Product Configuration	1	Single-Sided Lane-Oriented Model
			2	Tw in I
			3	Tw in II
5			Tw in IHS	
F	Hydraulic System	D	Remote Dispenser	
		P	Suction Pump	
	/			
First Suffix	Z	Standard	2	Enhanced Capacity (1" Piping)
			G	Internal Filter
			J	Explosion-Proof AC Junction Box
			K	Hose Hanger
	Z	Options	5	Lane-Oriented (G6200 Series Only)
			7A	10:1 Qty. Pulser
			7B	100:1 Qty. Pulser
			7C	100:1 Money Pulser
			8	Liter Measure
			D3	Healy VR option on 1 hose
			D4	Healy VR option on 2 hoses
			Z	230 VAC 50/60 Hz Operation
				/
Second Suffix	Y	Options	A	Lights w/ Translucent Panels
			C	50 Hz Operation of Light Option
			F	Reversed Accumulative Totalizer
			G	380VAC 50/60 Hz Motor
			H	Internal Hose Retractor
			J	Hose Mast Kit
			M	Spring-Loaded Inlet Check Valve Kit
			S	All Stainless Steel Exterior Panels
			S1	Stainless Steel Sides, Top, Bezel & Base w/ Painted Galvaneal Doors
			S2	Stainless Steel Doors
W1	Two-Stage Solenoid Valves (Std. on Remote Dispensers and Tw in I Model)			
Customer Specs		Not Show n in Model Number		Optional Paint Colors

This page intentionally blank

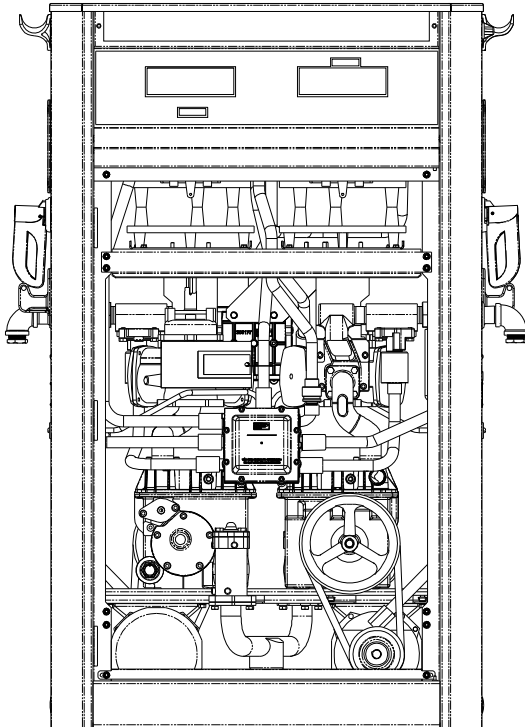
1.5 Models



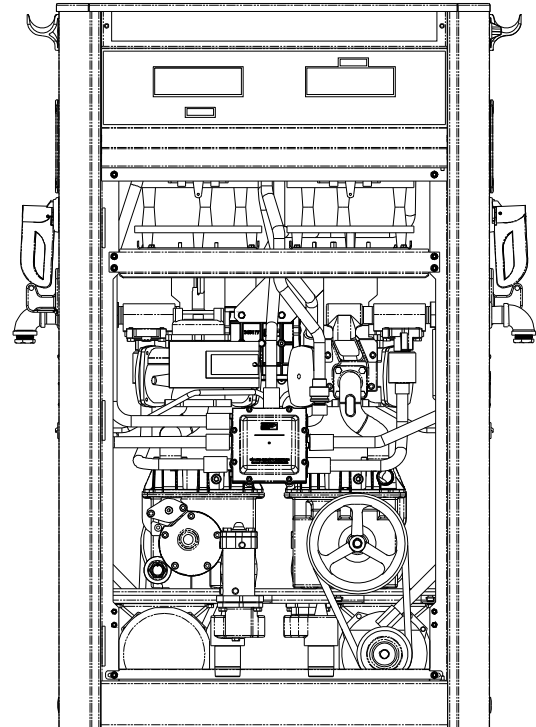
G5201P/2 Single
G6201P/2 Single



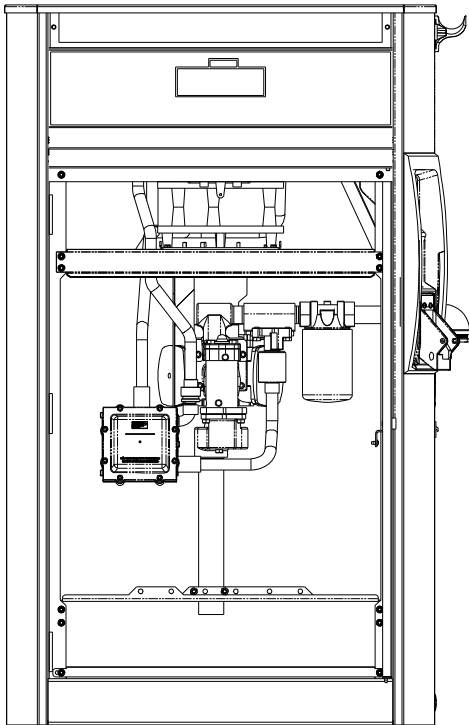
G5202P/2 Twin I
G6202P/2 Twin I



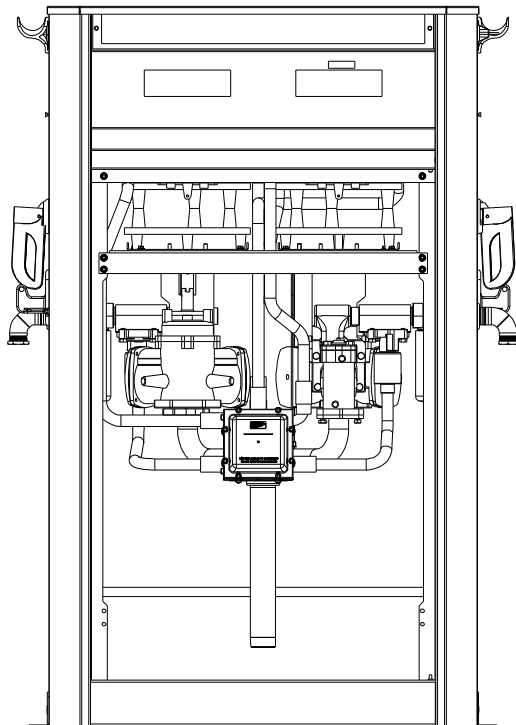
G5205P/2 Twin I HS
G6205P/2 Twin I HS



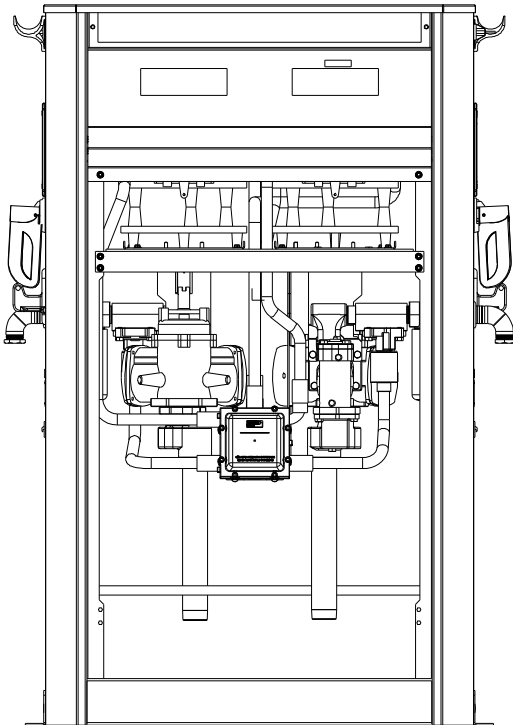
G5203P/2 Twin II
G6203P/2 Twin II



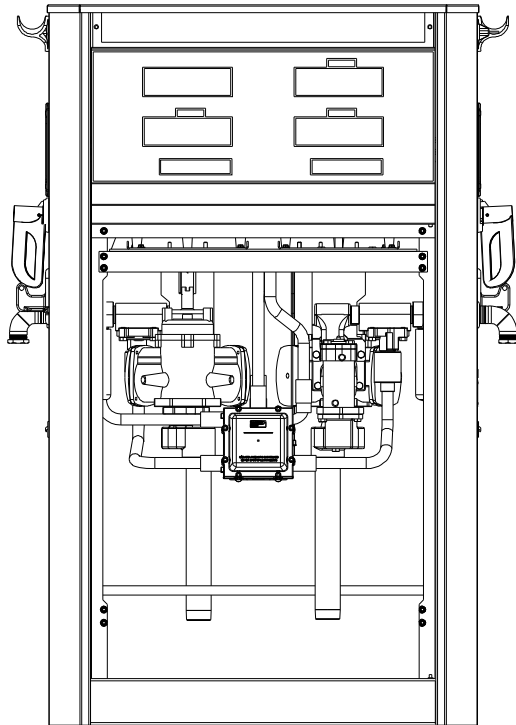
G5201P/2 Single
 G6201P/2 Single
 (Typical View of a Front-Load G6201D/2)



G5202D/2 Twin I
 G6202D/2 Twin I



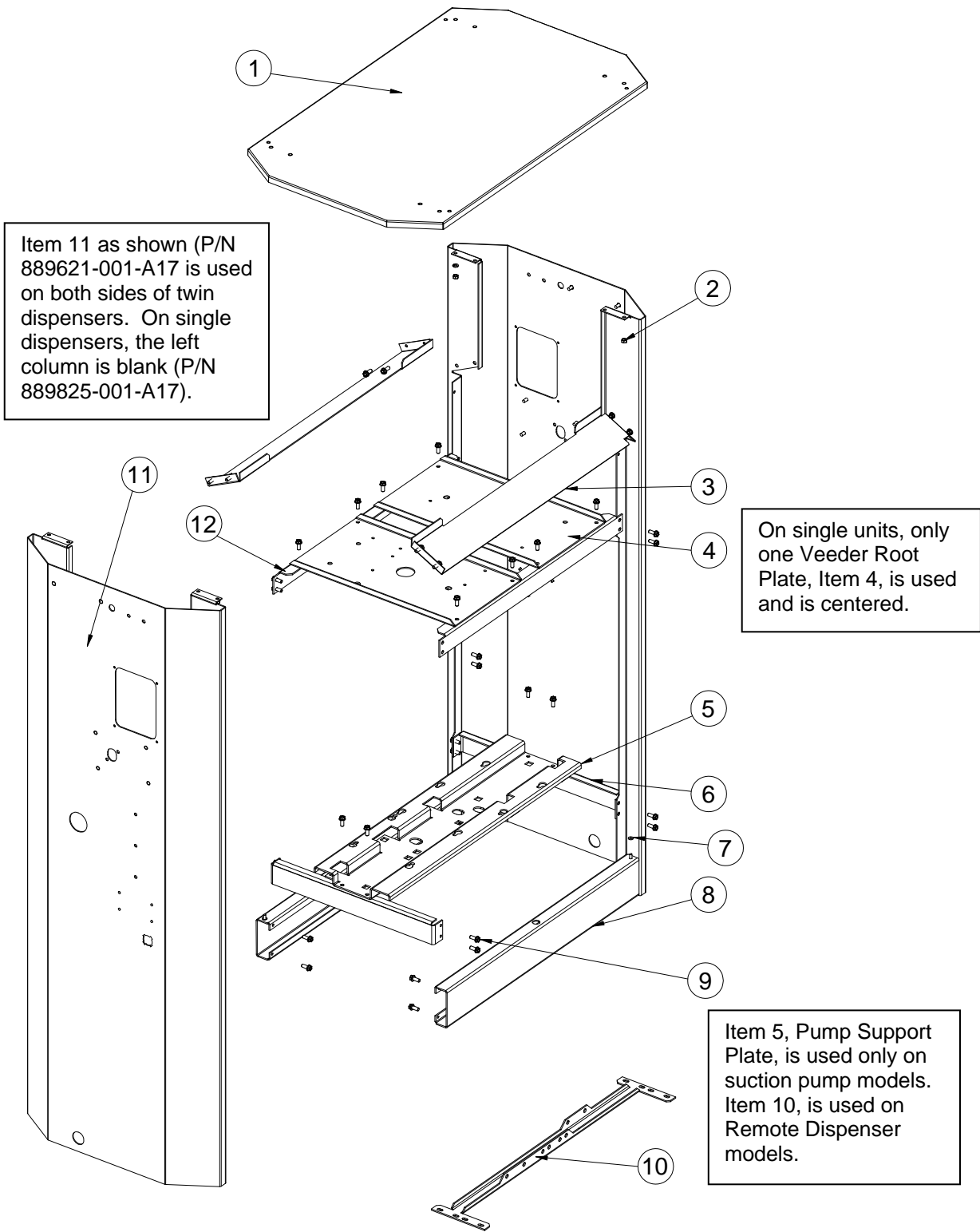
G6203D/2 Twin II



G5203P/2 Twin II
 (Typical View of a 5200 Series Bezel)

2. Housing, Exterior Trim & Hose Handling

2.1 Dispenser Cabinet

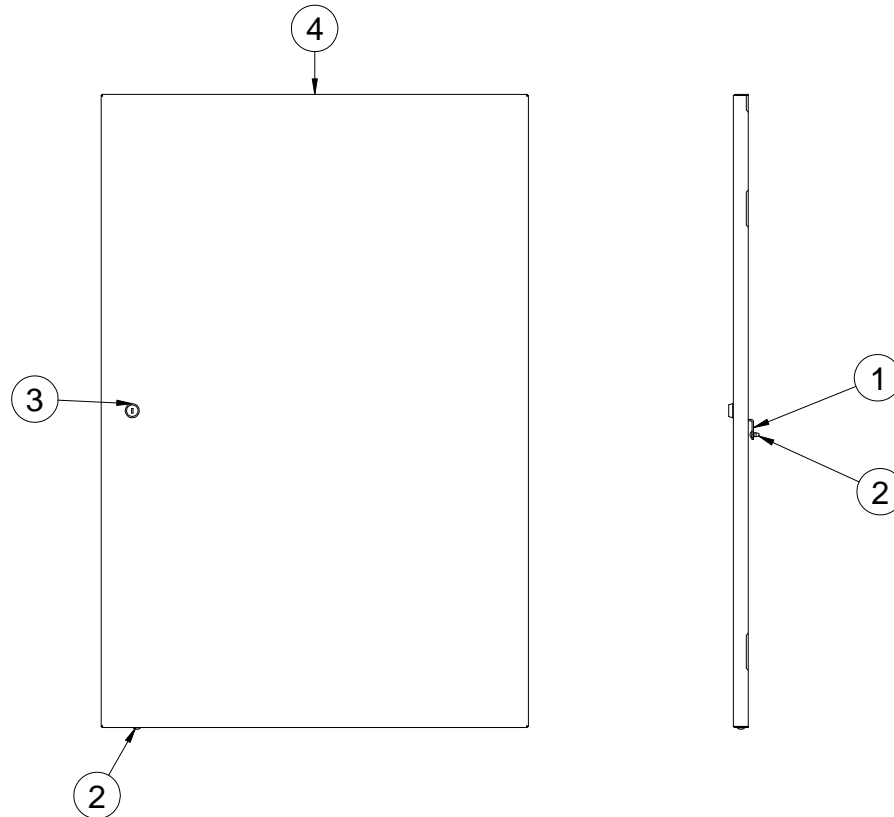


Item No.	Part No.	Description	Quantity per Model							
			Suction Models		Remote Models					
			Single	Twin	Single	Twin				
1	889625-001-A17	Top Cover G6200, Silver (A17)	1	1	1	1				
	889625-002	Top Cover G6200, Stainless								
2	001-921088-	Nut, M6 Hex KEPS	4	4	4	4				
3	889626-001	Dial Pan, G6200 (Part Shown)	2	2	2	2				
	892281-001	Drip Channel, G5200								
4	889615-001	Plate, Veeder Root	1	2	1	2				
5	889622-001	Plate,Pump Support	1	1	N/A	N/A				
6	889613-001	Bracket, Pump Support	2	2	2	2				
7	889827-001	Washer, Nylon Retainer	2	2	2	2				
8	889614-001-A17	Base, G6200, Silver (A17)*	2	2	2	2				
	889614-002	Base, G6200, Stainless								
9	000-918513-	Screw, Shakeproof, Tap/R TH	40	44	40	44				
10	889844-001	Brace, Reliance Inlet	N/A	N/A	1	1				
11	889621-001-A17	Side Column, 6200 Right, Silver (A17)	1	2	1	2				
	889621-011-A17	Side Column, 6200 Right, Healy, Silver (A17)								
	889621-002	Side Column, 6200 Right, Stainless								
	889621-012	Side Column, 6200 Right, Healy, Stainless								
	890890-001-A17	Side Column, 5200 Right, Silver (A17)								
	890890-011-A17	Side Column, 5200 Right, Healy, Silver (A17)								
	890890-0SS	Side Column, 5200 Right, Stainless								
	890890-0SS-001	SIDE COL, 5200 Right, Healy, Stainless								
	889825-001-A17	SIDE COL, 6200 Blank, Silver (A17)					1	N/A	1	N/A
	889825-002	SIDE COL, 6200 Blank, Stainless								
890891-001-A17	SIDE COL, 5200 Blank, Silver (A17)									
890891-0SS	SIDE COL, 5200 Blank, Stainless									
12	889616-001	Bracket, Veeder Root	2	2	2	2				
	890874-001	Rain Deflector (Not Shown - Mounts at Base of Disp)	2	2	2	2				

2.2 Touch Up Paint (2 Oz. Bottle)

Part No.	Color
891435-001-A17	Metallic Silver
891435-001-J21	Black
891435-001-B12	Blue
891435-001-0W7	Bright White
891435-001-W98	Red

2.3 Door and Locks



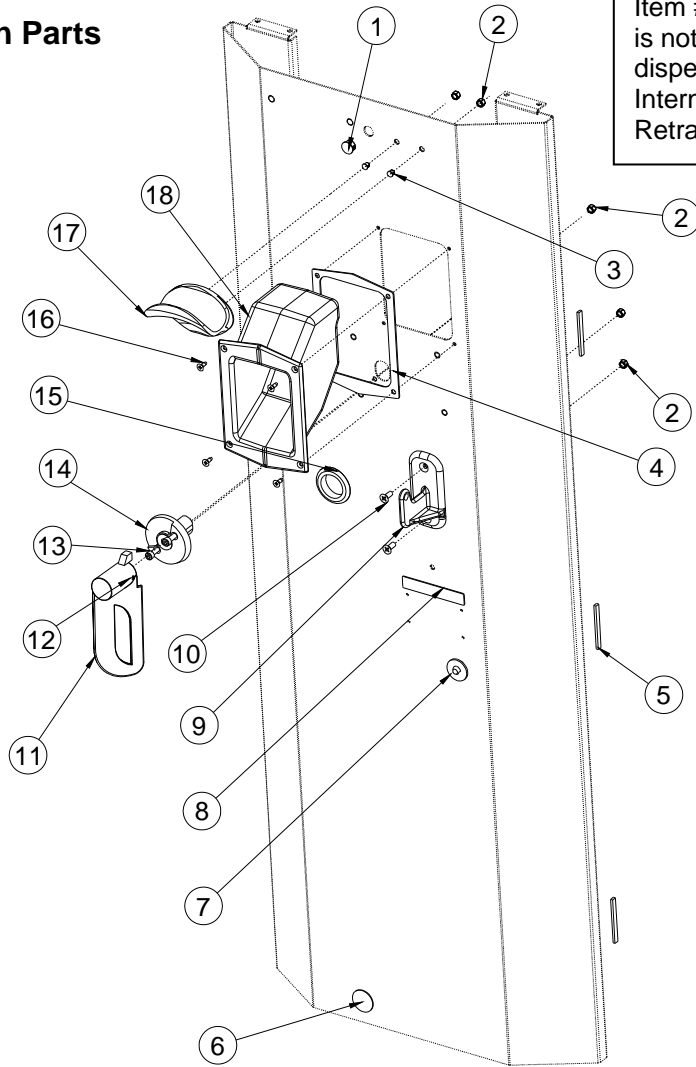
Item No.	Part No.	Description	Quantity per Door
1	003-301208-	Latch, Door Lock	1
2	000-128993-	Button Head Dart	2
3	000-127417-	Lock & Key	1
	000-001290-	Key Only	1
4*	889632-001-B12	Door Panel G6200, Blue (B12)	1
	889632-001-J21	Door Panel G6200, Black (J21)	
	889632-001-G67	Door Panel G6200, Green (G67)	
	889632-001-R98	Door Panel G6200, Red (R98)	
	889632-001-A17	Door Panel G6200, Silver (A17)	
	889632-001-0W7	Door Panel G6200, White (W7)	
	889632-002	Door Panel G6200, Stainless Steel	
	890896-001-B12	Door Panel G5200, Blue (B12)	
	890896-001-J21	Door Panel G5200, Black (J21)	
	890896-001-G67	Door Panel G5200, Green (G67)	
	890896-001-R98	Door Panel G5200, Red (R98)	
	890896-001-A17	Door Panel G5200, Silver (A17)	
	890896-001-0W7	Door Panel G5200, White (W7)	
	890896-002	Door Panel G5200, Stainless Steel	

*Note: For custom colors, consult factory for part number.

2.4 Side Column Parts

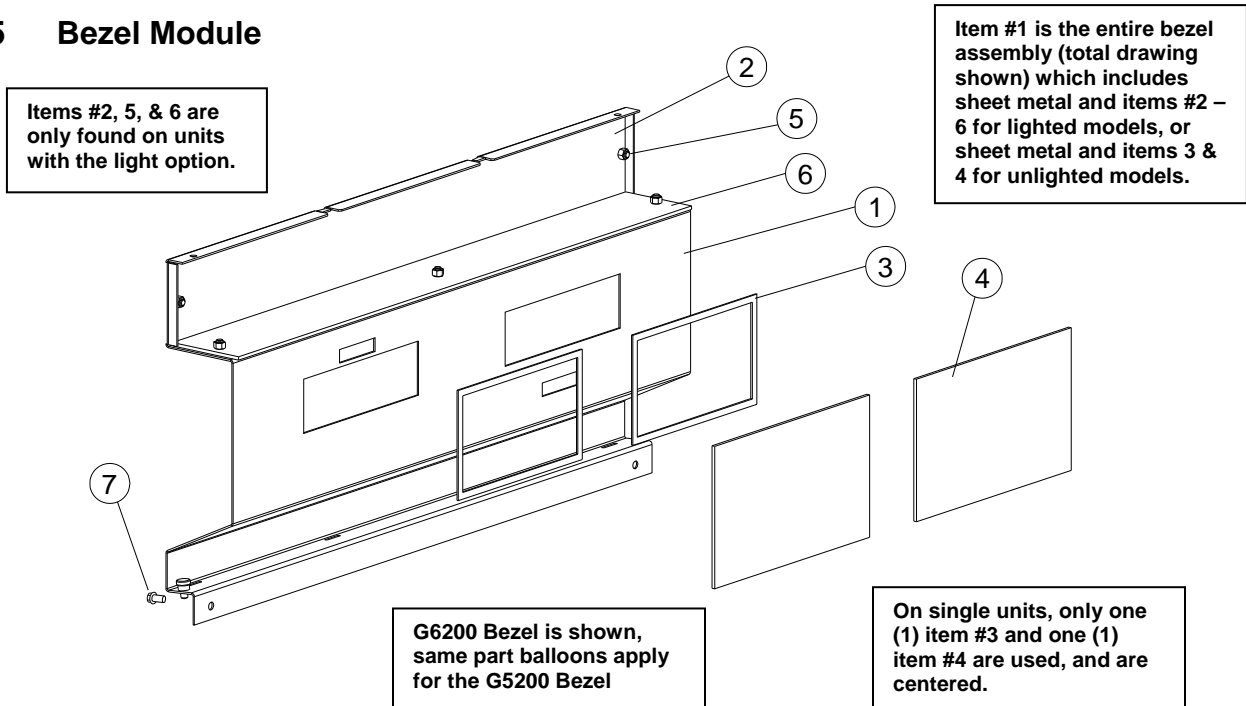
Item #17, Hose Support, is not used if dispenser includes Internal Hose Retractor option.

Item #1, Plug Button, is not used if dispenser includes Internal Hose Retractor option.



Item No.	Part No.	Description	Quantity per Column
1	889897-001	Plug Button, 0.562 ID	1
2	001-921088-	Nut, M6 Hex KEPS	6
3	5006401	Plug Hole .250 Black (DP-25)	2
4	889824-001	Gasket, Nozzle Boot	1
5	005-129830-	Gasket	3
6	889898-001	Plug Button, 1.125	1
7	000-154289-	Plastic for Vent Tube	1
8	004-128243-	Label	1
9	889698-002	Hokk, Nozzle, Machined	1
10	889855-001	Screw M6X16MM FLPHSS	2
11	889863-001	Pump Handle	1
12	889852-001	Roll Pin, 5mm X 30mm	1
13	001-921053-	SHCS M6 X 1 X 16mm	2
14	889864-001	Handle Limiter	1
15	889858-001	Rubber Grommet, 1.31 ID	1
16	889854-001	Screw, 10-32X1/2 FL-PHSS	4
17	001-305027-	Hose Support	1
18	889628-002	Nozzle Boot	1

2.5 Bezel Module



2.5.1 Product I.D. Decals (not shown)

Decal Colors: Blue background with white lettering for dispensers with blue doors.
Black background with white lettering for use with all other door colors.

Single Product: Order for single models and single product twin models. Single product decals cover the length of the bezel. Order two (2) of desired part number to cover both sides.

Two Products: Order for two-product twin models. These decals cover half the length of the bezel and are designed to have two placed side by side. Order two part numbers, one for each product. Order two (2) of each part number to cover both sides.

Product I.D.	Single Product		Two Products	
	Blue	Black	Blue	Black
(BLANK)	889842-001-001	889842-001-022	889842-002-001	889842-002-020
DIESEL	889842-001-002	889842-001-020	889842-002-002	889842-002-021
DIESEL #1	889842-001-003	889842-001-023	889842-002-003	889842-002-022
DIESEL #2	889842-001-004	889842-001-024	889842-002-004	889842-002-023
OFF HWY DIESEL	889842-001-005	889842-001-025	889842-002-005	889842-002-024
OFF ROAD DIESEL	889842-001-006	889842-001-021	889842-002-006	889842-002-025
ON ROAD DIESEL	889842-001-007	889842-001-026	889842-002-007	889842-002-026
RED DIESEL	889842-001-008	889842-001-027	889842-002-008	889842-002-027
GASOLINE	889842-001-009	889842-001-028	889842-002-009	889842-002-028
REGULAR	889842-001-010	889842-001-029	889842-002-010	889842-002-029
UNLEADED	889842-001-011	889842-001-030	889842-002-011	889842-002-030
REGULAR UNLEADED	889842-001-012	889842-001-031	889842-002-012	889842-002-031
SUPER UNLEADED	889842-001-013	889842-001-032	889842-002-013	889842-002-032
UNLEADED PLUS	889842-001-014	889842-001-033	889842-002-014	889842-002-033
PREMIUM UNLEADED	889842-001-015	889842-001-034	889842-002-015	889842-002-034
KEROSENE	889842-001-016	889842-001-035	889842-002-016	889842-002-035
RACING GASOLINE	889842-001-017	889842-001-036	889842-002-017	889842-002-036
AVGAS	889842-001-018	889842-001-037	889842-002-018	889842-002-037
JET FUEL	889842-001-019	889842-001-038	889842-002-019	889842-002-038

2.5.2 G6200 Bezel Assembly

Item No.	Unit of Measure	Finish	G6200 Entire Bezel Assembly			
			Single		Twin	
			Unlighted	Lighted	Unlighted	Lighted
1	Gallons	Silver (A17)	889689-002-006	889689-001-007	889620-002-006	889620-001-007
		Stainless	Use Lighted Assy	889689-001-003	Use Lighted Assy	889620-001-003
	Liters	Silver (A17)	889689-002-007	889689-001-008	889620-002-007	889620-001-008
		Stainless	Use Lighted Assy	889689-001-004	Use Lighted Assy	889620-001-004
	Litres (Canada)	Silver (A17)	889689-002-005	889689-001-005	889620-002-005	889620-001-005
		Stainless	Use Lighted Assy	889689-001-006	Use Lighted Assy	889620-001-006

2.5.3 G5200 Bezel Assembly

Item No.	Unit of Measure	Finish	G5200 Entire Bezel Assembly			
			Single		Twin	
			Unlighted	Lighted	Unlighted	Lighted
1	Gallons	Silver (A17)	N/A	890894-001-001	N/A	890895-001-001
		Stainless	N/A	890894-0SS-001	N/A	890895-0SS-001
	Liters	Silver (A17)	N/A	N/A	N/A	N/A
		Stainless	N/A	N/A	N/A	N/A

Note: There are 2 bezels per dispenser. The bezel assembly does not include the Product ID decals from the previous page. Decals must be ordered separately from the chart on the previous page. For custom bezel colors, consult the factory.

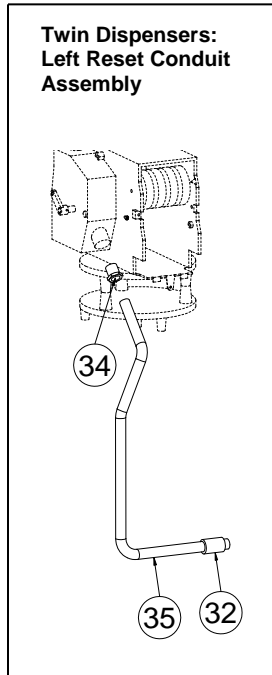
2.5.4 Bezel Parts for the G6200 and G5200 Assembly

Note: This chart applies to the bezel drawing on the previous page. When ordering glass, also order the gasket (Item #3). Installation of the display glass requires silicone sealant/adhesive (not included, source locally).

Item No.	Part No.	Description	Quantity per Bezel			
			Single		Twin	
			Unlit.	Lighted	Unlit.	Lighted
2	889629-001	Lens, Product	N/A	1	N/A	1
3	889699-001	Gasket, G6200	1	1	2	2
	889699-002	Gasket, G5200	N/A	1	N/A	2
4	889631-001**	Display Glass G6200**	1	1	2	2
	889631-002**	Display Glass G5200**	N/A	1	N/A	2
5	882666-014	Nut, M6 KPNTMSSTZN	N/A	5	N/A	5
6	889630-001	Lens, Light	N/A	1	N/A	1
7	000-918513-	Screw, G6200	2	2	2	2
	890886-001	Thumb Screw, ¼-20x½" G5200	N/A	2	N/A	2

3. Register and Meter Module

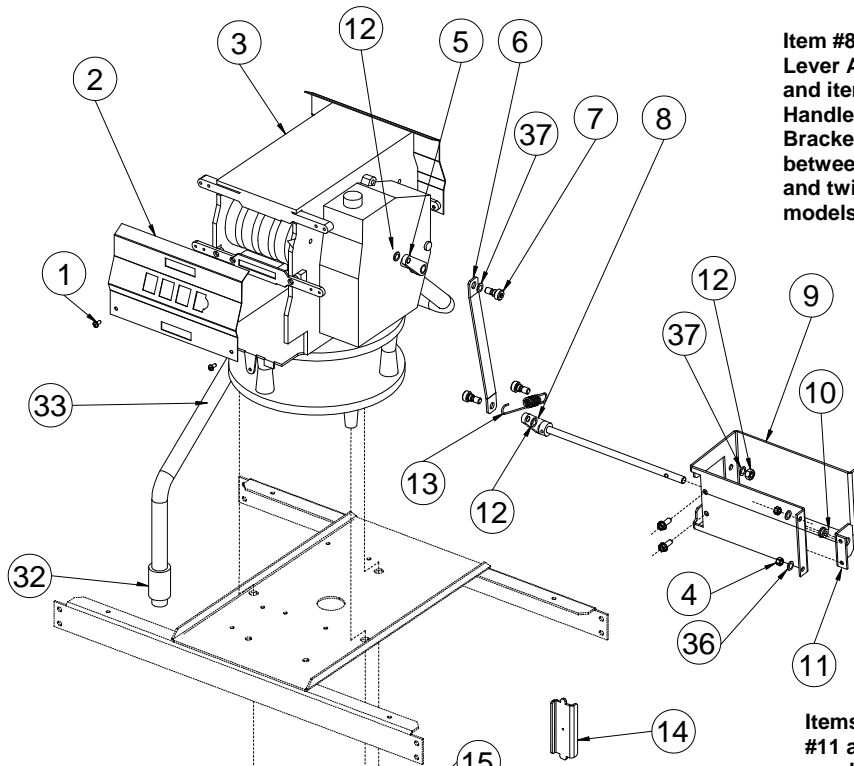
The Register & Meter Module Assembly shown below is for single models and the right side of twin models (with any exceptions noted). The Register & Meter Module Assembly for the left side of twin models is the same except for item #35, Left Reset Conduit, shown below in the boxed view. Reference the next two sections for breakdowns of the register reset assembly and the meter assembly.



For item #3, select correct part number for Gallons or Liters, and 110VAC or 220VAC.

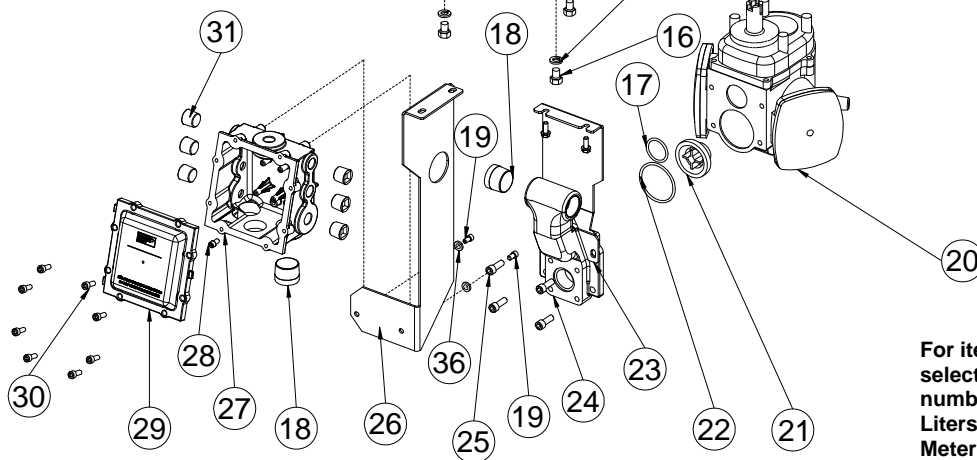
G6200 Register and Dial Mask shown. Same Balloons apply for G5200 Register.

Item #8, Shaft & Lever Assembly, and item #9, Handle Spring Bracket, differ between single and twin models.



Quantity of item #31 will vary depending upon options.

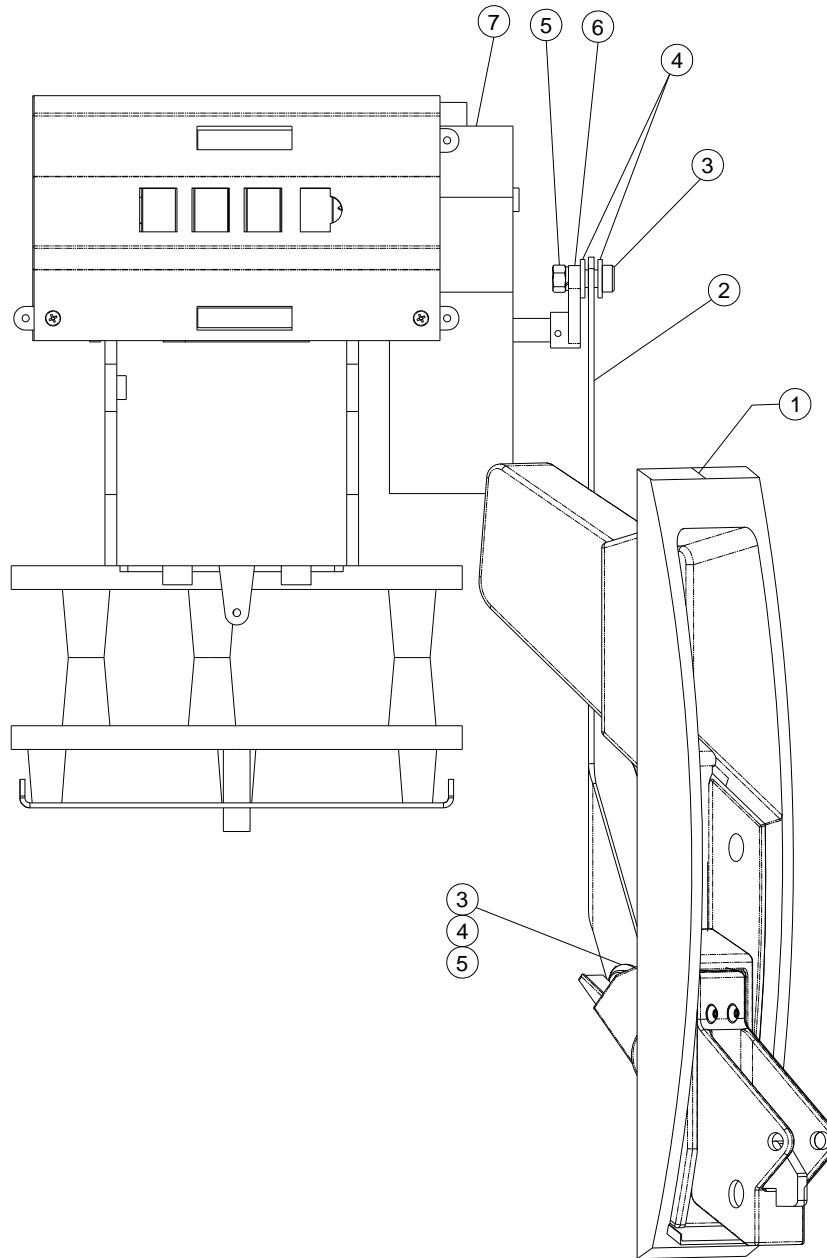
Items #10 & #11 are not used on twin models.



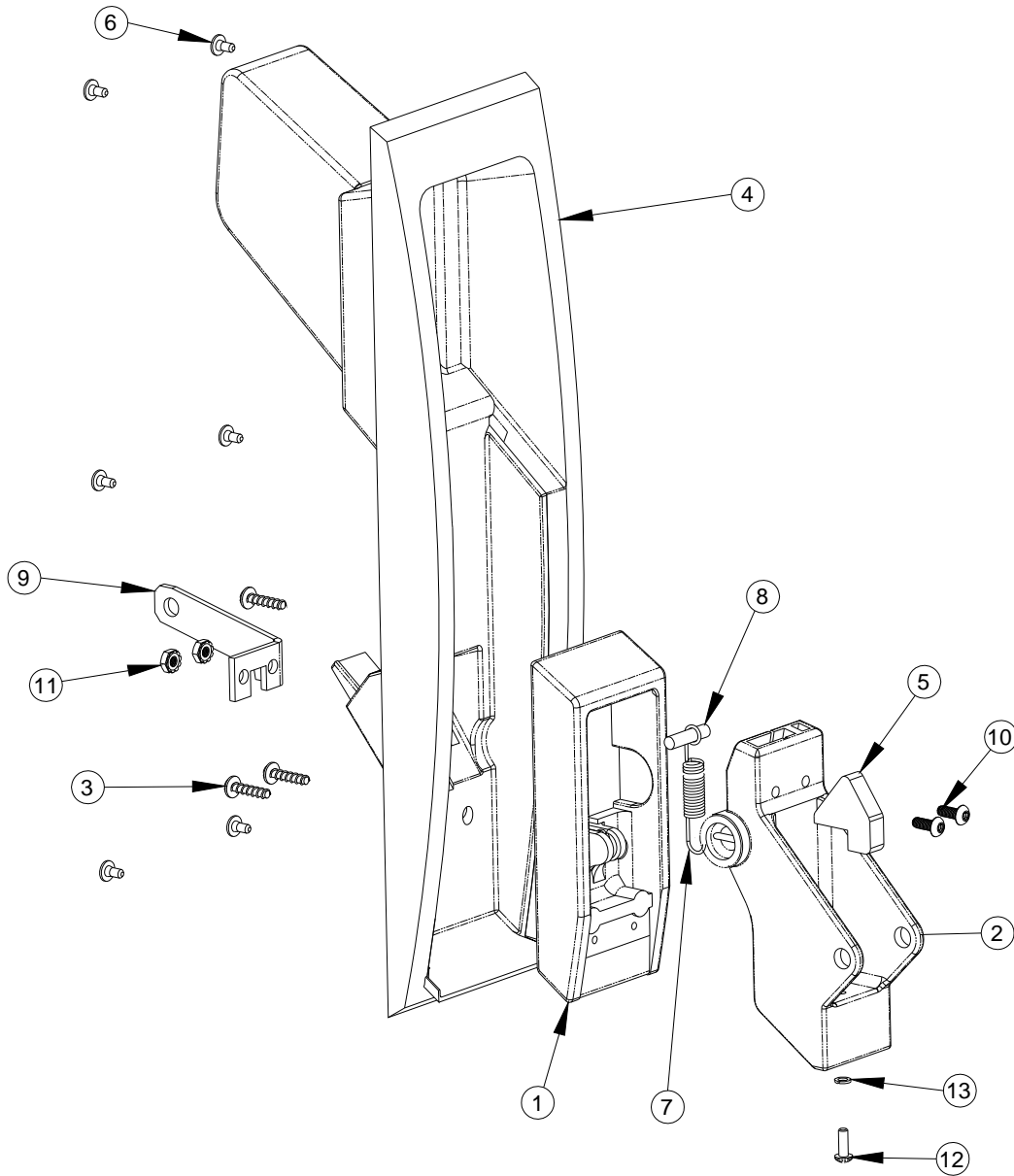
For item #20, Meter, select correct part number for Gallons or Liters version. See the Meter Assembly section for a breakdown of the meter.

Item No.	Part No.	Description	Quantity per Model	
			Single	Twin
1	889857-001	Screw 8-36X3/8 PHPHSTZN	4	8
2	889623-001-J21	Dial Mask, G6200	2	4
	890885-001	Dial Mask, G5200, Standard Decimal Location		
3	889861-001	Register & ER, G6200 Gallons 110V	1	2
	889861-002	Register & ER, G6200 Gallons 220V		
	889861-003	Register & ER, G6200 Liters 110V		
	889861-004	Register & ER, G6200 Liters 220V		
	890878-001	Register & ER, G5200 Gallons 110V		
	890878-002	Register & ER, G5200 Gallons 220V		
	889935-100	Register Only, G6200 Gallons		
	889935-101	Register Only, G6200 Liters		
	889935-102	Register Only, G5200 Gallons		
	889935-103	Totalizer, Quantity		
889935-104	Totalizer, Money			
4	001-921088-	Nut, M6 X 1 Hex	4	8
5	889902-001	Lever Casting	1	2
6	889692-001	Linkage Arm	1	2
7	889866-001	Shoulder Screw, 5/16-18 X 3/8	3	6
8	889839-001	Shaft & Lever Assy, Single	1	N/A
	889840-001	Shaft & Lever Assy, Twin	N/A	2
9	889693-001	Bracket, Handle Spring, Single	1	N/A
	889693-002	Bracket, Handle Spring, Twin	N/A	2
10	889867-001	Bearling, Nylon 3/8 Shaft	1	N/A
11	889828-001	Bracket, Lever Shaft Support	1	N/A
12	000-509584-	Nut 5/16-18 HXNTMSSTZN	3	6
13	889851-001	Spring, Linkage	1	2
14	889826-001	Linkage, Meter to Register	1	2
15	000-902018-	Lock Washer 3/8"X1/8"X3/32"	3	6
16	000-512835-	HHCS 3/8-24,X 1/2 CD	3	6
17	WP000023-0001	O-Ring, FS (used for standard fuels)	1	2
	099-120723-	O-Ring, E-85		
18	000-509655-	Pipe Plug, Zinc SQ. HD. 1"	1	2
	003-509655-	Pipe Plug, Black SQ. HD. 1", E Prefix		
19	002-918650-	HHCS M6 X 1.0 X 12MM	2	2
20	000-046378-	Meter, 2PM-6-R Assy (Gallons)	1	2
	003-039310-	Meter, 2PM-6-R Assy (Liters)		
	000-046378-ETH	Meter, 2PM-6-R (Gallons, E Prefix)		
21	000-300314-	Check Valve and Pressure Relief Assy	1	2
22	WP000024-0001	O-Ring, FS (used for standard fuels)	1	2
	099-120722-	O-Ring, E-85		
23	889836-001	Bracket, Meter	1	2
24	889683-004	Casting, Meter I/O	1	2
	889683-004-ENP	Casting, Meter I/O, E Prefix		
25	889906-001	Screw 5/16-18X7/8 SHCSSTZN	4	8
26	889697-001	Bracket, AC Junction Box	1	1
27	003-306177-	JBox Body, 54Cu In, UL	1	1
28	001-921551-	Screw, Ground M6X8MM Green	1	1
29	001-306180-	Jbox Cover, 54 Cu In	1	1
30	001-921053-	SHCS M6 X 1 X 16mm	8	8
31	000-508919-	1/2" Countersink Pipe Plug, Zinc	5 (max)	3 (max)
32	001-218941-	Expansion Union	1	2
33	889930-001	Conduit Assy, Reset Right	1	1
34	000-513311-	Bushing Reducing 3/4" X 1/2"	1	2
35	889931-001	Conduit Assy, Reset Left	N/A	1
36	000-901798-	Lock Washer, M6	6	10
37	000-902017-	Lock Washer 5/16 X 1/8 X 1/16 SPL	3	6

4. Front-Load Nozzle Boot and Linkage

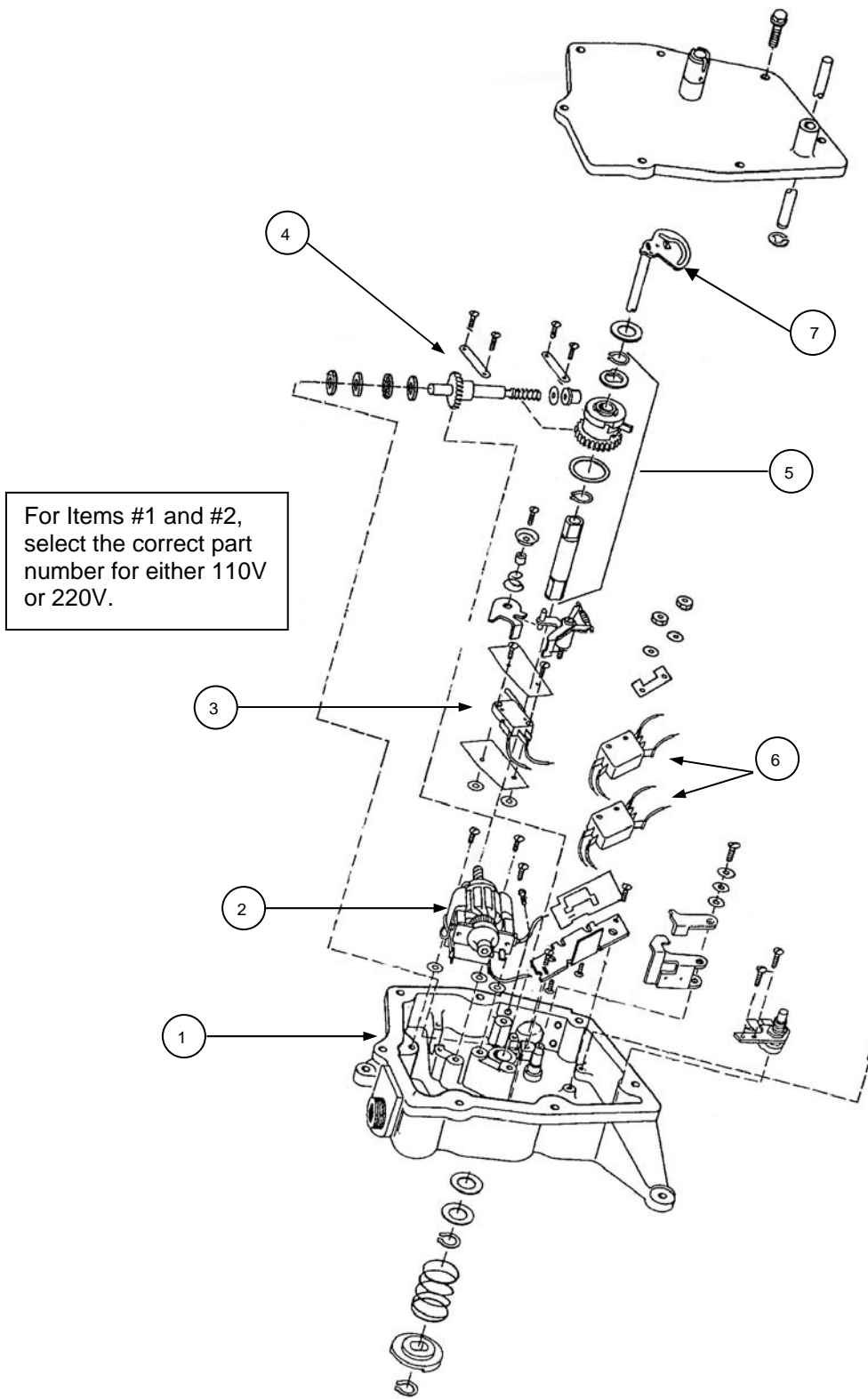


Item No.	Part No.	Description	Qty per Reset
1	006-306362-001	NOZZLE BOOT ASSY	1
2	892262-001	LINKAGE, G6200 LANE SINGLE	1
	892263-001	Linkage, G6200 Lane Twin	1
3	889866-001	Shoulder Screw	2
4	891843-001	Washer, Rubber	4
5	000-509584-	Nut, 5/16-18	2
6	889935-005	VR Reset Jack Shaft Assy	1
7	889935-004	VR Reset Control Switch	2



Item No.	Part No.	Description	Qty
Full Assy	006-306362-001	Nozzle Boot Assy (Includes all parts shown)	1
1	001-306399-	Guide-Filler	1
2	891831-001	Lever	1
3	000-918104-	Plascrew	3
4	891830-001	Nozzle Boot	1
5	891827-001	Nozzle Hook	1
6	001-921313-	Screw M4X8	6
7	001-129953-	Spring	1
8	000-918919-	Magnet	1
9	891826-001	Lever Adapter	1
10	891832-001	Screw 10-32X1/2	2
11	6019404	Nut, 10-32	2
12	000-918137-	Screw 8-32X1/2	1
13	000-916736-	Washer, Lock #8	1

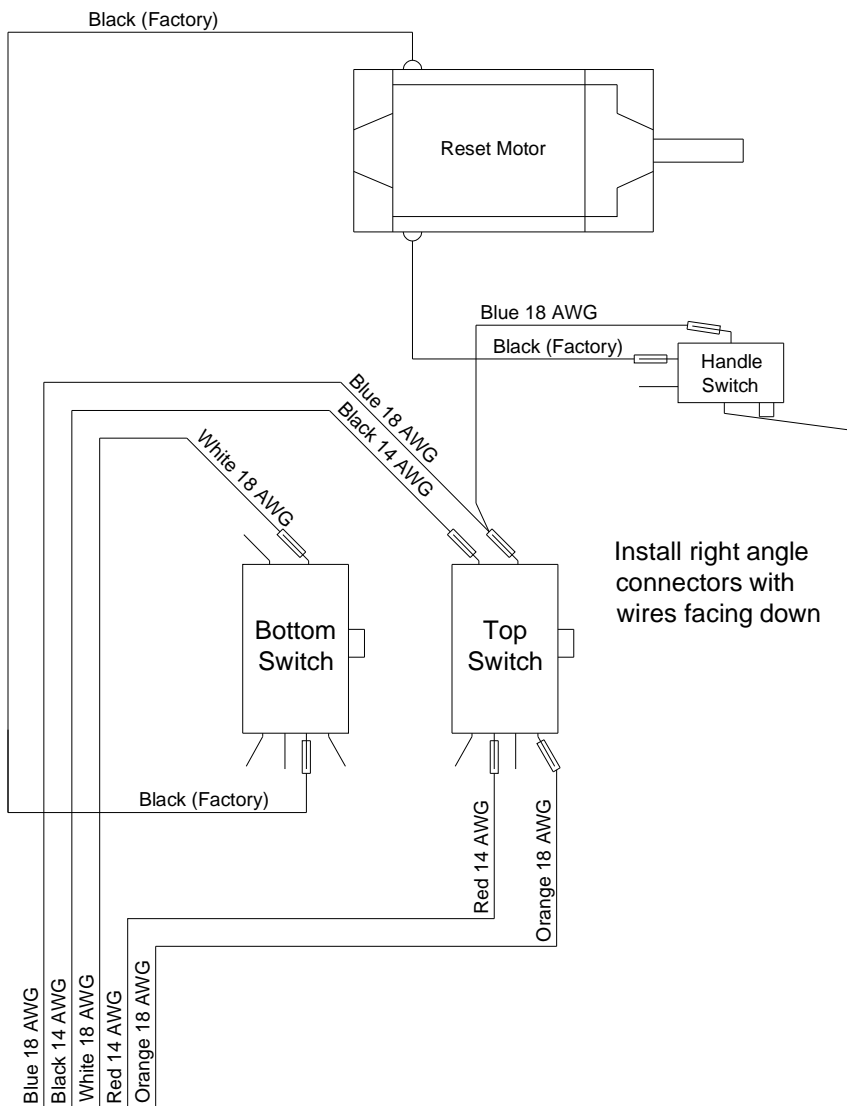
5. Register Reset Assembly



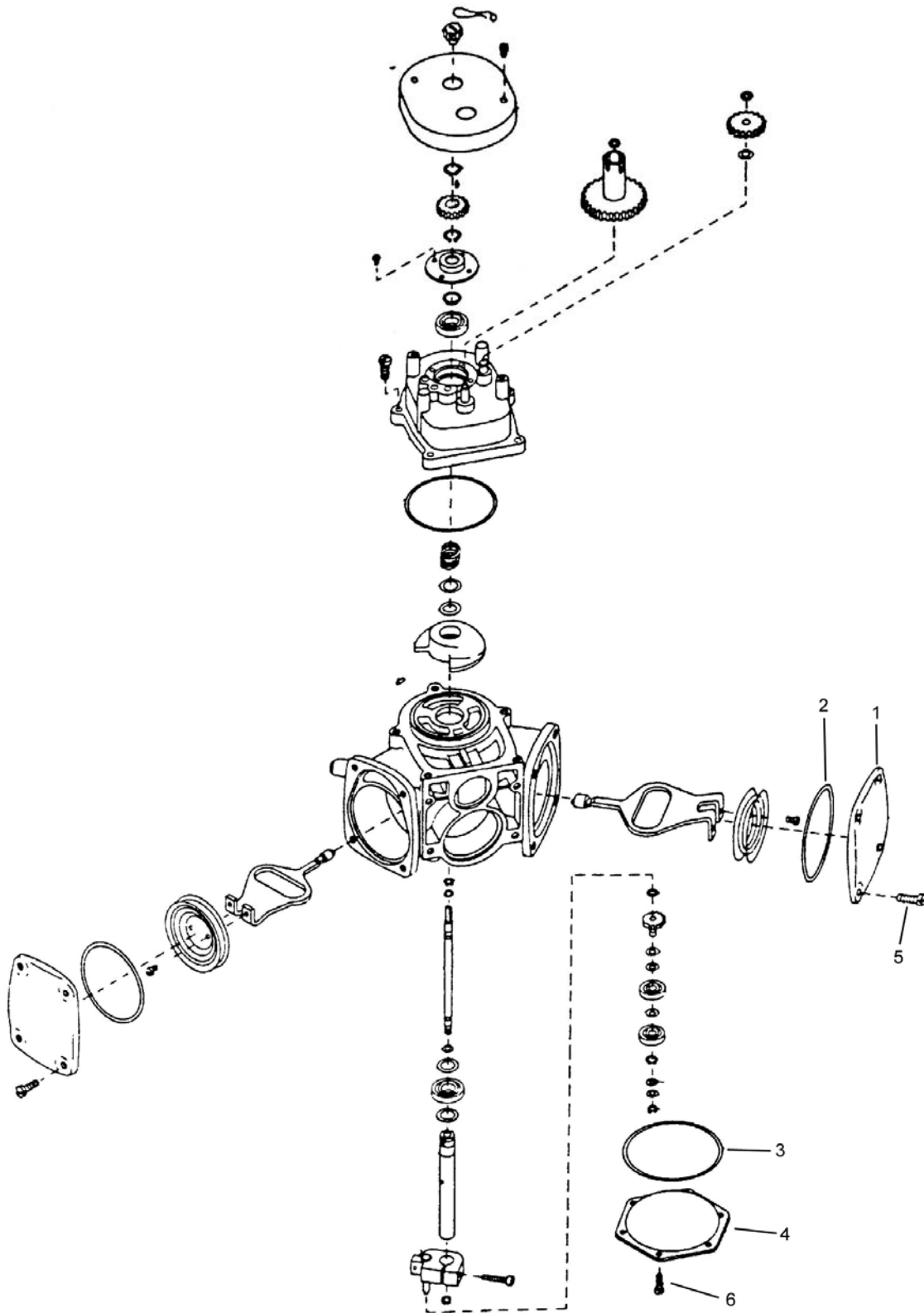
Item No.	Part No.	Description	Qty per Reset
1	889691-001	Entire Reset Assy, 110V	1
	889691-002	Entire Reset Assy, 220V	
2	889935-001	VR Reset Motor, 110V	1
	889935-002	VR Reset Motor, 220V	
3	889935-003	VR Reset Motor Switch	1
4	889935-005	VR Reset Jack Shaft Assy	1
5	889935-006	VR Reset Clutch Shaft Group	1
6	889935-004	VR Reset Control Switch	2
7	004-317733-004	Reset Cam	1

Reset Wiring

Whenever a Reset or Reset/Register Assembly is replaced in the field, the AC wire harness traveling from the AC junction box to the Reset must be re-wired into the new Reset as shown below.



6. Meter Assembly

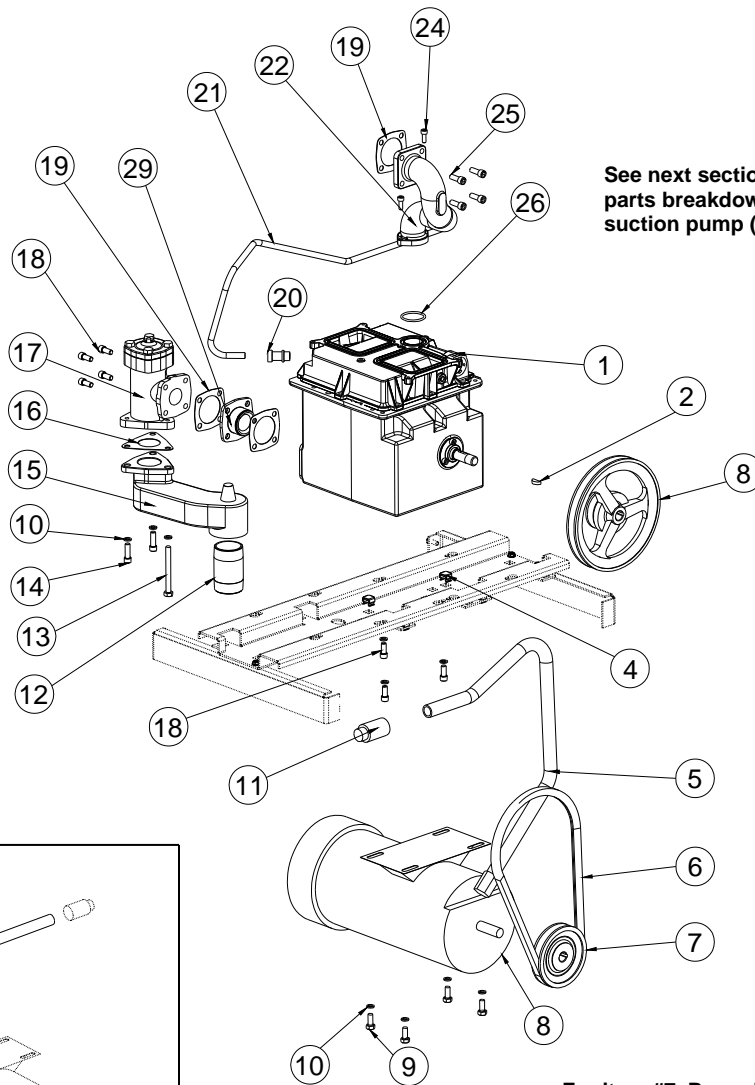
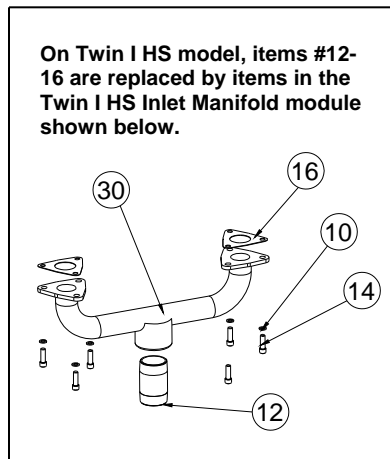
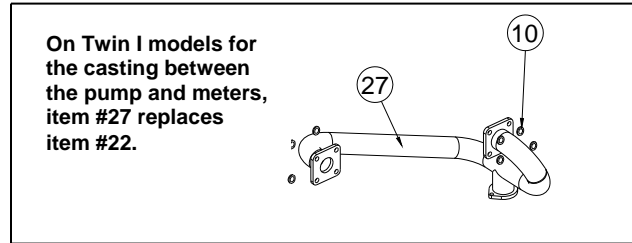
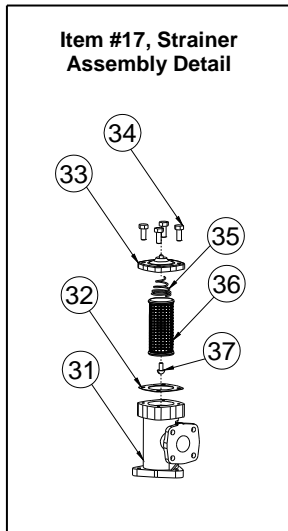


Note: While all parts are shown in the exploded view, only the following parts can be ordered.

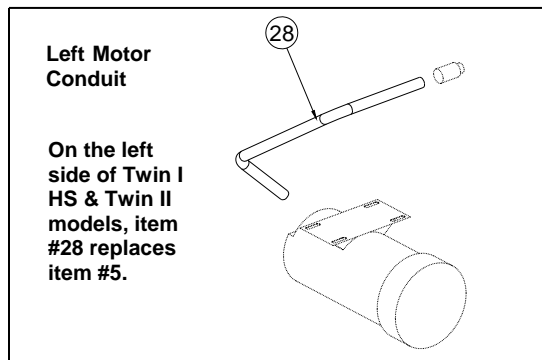
Item No.	Part No.	Description	Quantity per Meter
	000-046378-	Meter, 2PM-6-R Assy (Gallons)	
	003-039310-	Meter, 2PM-6-R Assy (Liters)	
	000-046378-ETH	Meter, 2PM-6 (Gallons, E85)	
1	006-038765-	Cylinder Cover	2
	004-038765-	Cylinder Cover, E85	
2	000-120406-	O-Ring, Cylinder Cover	2
	005-120406-	O-Ring, Cylinder Cover, FS	
	099-120406-	O-Ring, Cylinder Cover, E85	
3	000-120793-	O-Ring, Bottom Cover	1
	099-120793-	O-Ring, Bottom Cover, E85	
4	000-200549-	Bottom Cover	1
	002-200549-	Bottom Cover, E85	
5	000-918452-	Screw, WAHH ¼-20 X 1/2	8
6	002-513709-	Screw – HWH #12-24X1/2 TT	6

7. Suction Pump and Motor Module

The main module shown below is for Single, Twin I, and the right side of Twin I HS and Twin II models. Twin I models use a different casting between the pump and meters as shown in the boxed drawing. The left side of Twin II and Twin I HS models use the same module except with the left motor conduit shown in the lower boxed drawing. Twin I HS models use a manifolded inlet shown in the boxed drawing on the left.



See next section for parts breakdown of suction pump (CPU).



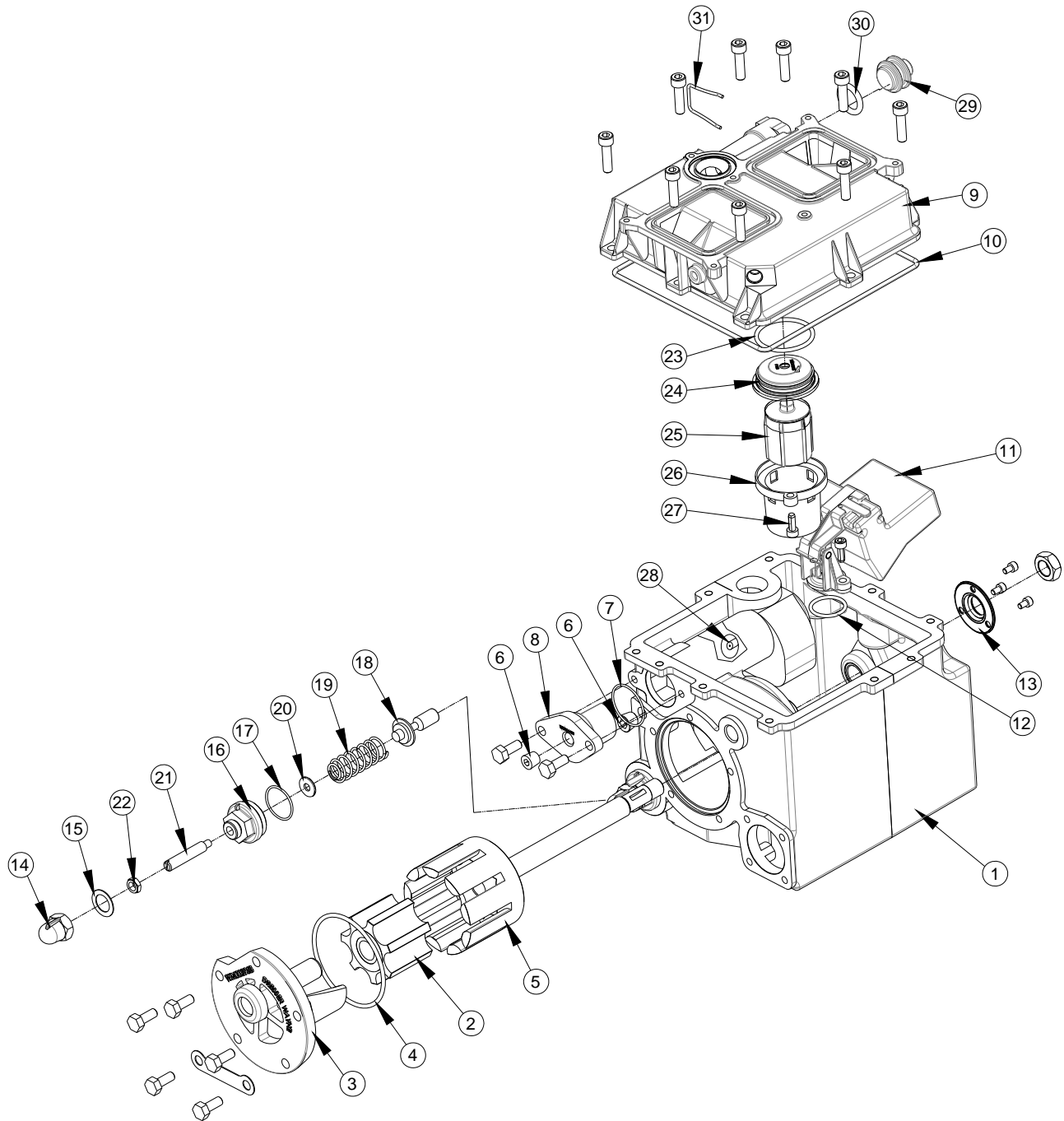
For item #7, Pump Pulley, select the correct part number for 60 or 50 Hz operation.

Item No.	Part No.	Description	Quantity per Model			
			Single	Twin I	Twin I HS	Twin II
1	889938-001	CPU Reliance	1	1	2	2
2	000-115550-	Key, Woodruff #606 ANSI	1	1	2	2
3	889934-001	Pulley, CPU 4-7/8" PD	1	1	2	2
4	002-918161-	Nut, Caged, 5/16-18, TINNER.	4	4	8	8
5	889819-001	Conduit, Motor, Right	1	1	1	1
6	000-918856-KIT	Kit, Belt, Plus V, Pwr Twist	1	1	2	2
7	001-301455-	Pulley, Motor 2.5"PD (for 60 Hz)	1	1	2	2
	002-301455-	Pulley, Motor 3.0"PD (for 50 Hz)				
8	001-301717-	Motor, 1HP	1	1	2	2
9	000-511096-	HHCS 5/16-18 X 7/8	4	4	8	8
10	000-902017-	Washer Lock, 5/16X1/8X1/16 SPL	10	18	20	20
11	001-218941-	Expansion Union	1	1	2	2
12	003-127756-	Nipple, 1-1/2 X 3 Galv.	1	1	N/A	2
13	889903-001	Screw M8X1.25X80MM HHCSTZN	1	1	N/A	2
14	000-918621-	Screw, M8X22 HHC	2	2	6	4
15	889901-001	Casting, Inlet Offset	1	1	N/A	2
16	889936-001	Gasket, Strainer	1	1	2	2
17	000-201829-	Strainer Assy	1	1	2	2
18	018-921269-	Screw M8 X 1.25 X 18mm SHCSSTZN	3	3	6	6
19	000-129882-	Gasket, Inlet	1	1	2	2
20	005-319636-	Connector, Male 3/8OD Tube	1	1	2	2
21	889837-001	Vent Tube, Single	1	N/A	N/A	N/A
	889838-001	Vent Tube, Twin	N/A	1	2	2
22	889684-004	Casting, Pump - Meter	1	N/A	2	2
23	000-120723-	O-Ring, 3.5MM X 35MM	1	2	2	2
24	001-921053-	SHCS M6 X 1 X 16mm	2	2	4	4
25	889906-001	Screw 5/16-18X7/8 SHCSSTZN	4	8	8	8
26	WM000612	O-Ring, 3.5MM X 35MM	1	1	2	2
27	889685-003	Pipe Manifold, TW1 Pump	N/A	1	N/A	N/A
28	889820-001	Conduit, Motor Left	N/A	N/A	1	1
29	001-305331-*	Check Valve, CPU Inlet (*Gasoline, See Note)	Option	Option	2	Option
	002-305331-*	Check Valve, CPU Inlet (*Non-Gas, See Note)	N/A	N/A	2	N/A
30	889686-003	Pipe Manifold, TW1 HS	N/A	N/A	1	N/A
31	000-047583-	Casting, Strainer Body	1	1	2	2
32	000-118869-	Gasket	1	1	2	2
33	000-200427-	Cover-Strainer	1	1	2	2
34	000-918650-	Screw, HHC M6 X 18mm	4	4	8	8
35	000-120529-	Spring	1	1	2	2
36	000-029362-	Strainer Assy	1	1	2	2
37	000-127441-	Screw, #10-24	1	1	2	2
38	001-127756-750	Nipple, 1-1/2 X 1-3/4 GALV.	N/A	N/A	1	N/A
39	003-918621-	Screw, M8X18 HHC	4	4	N/A	8
	000-918621	Screw, M8x22 HHC	N/A	N/A	8	N/A

*Note: Item #29 CPU Inlet Check Valve

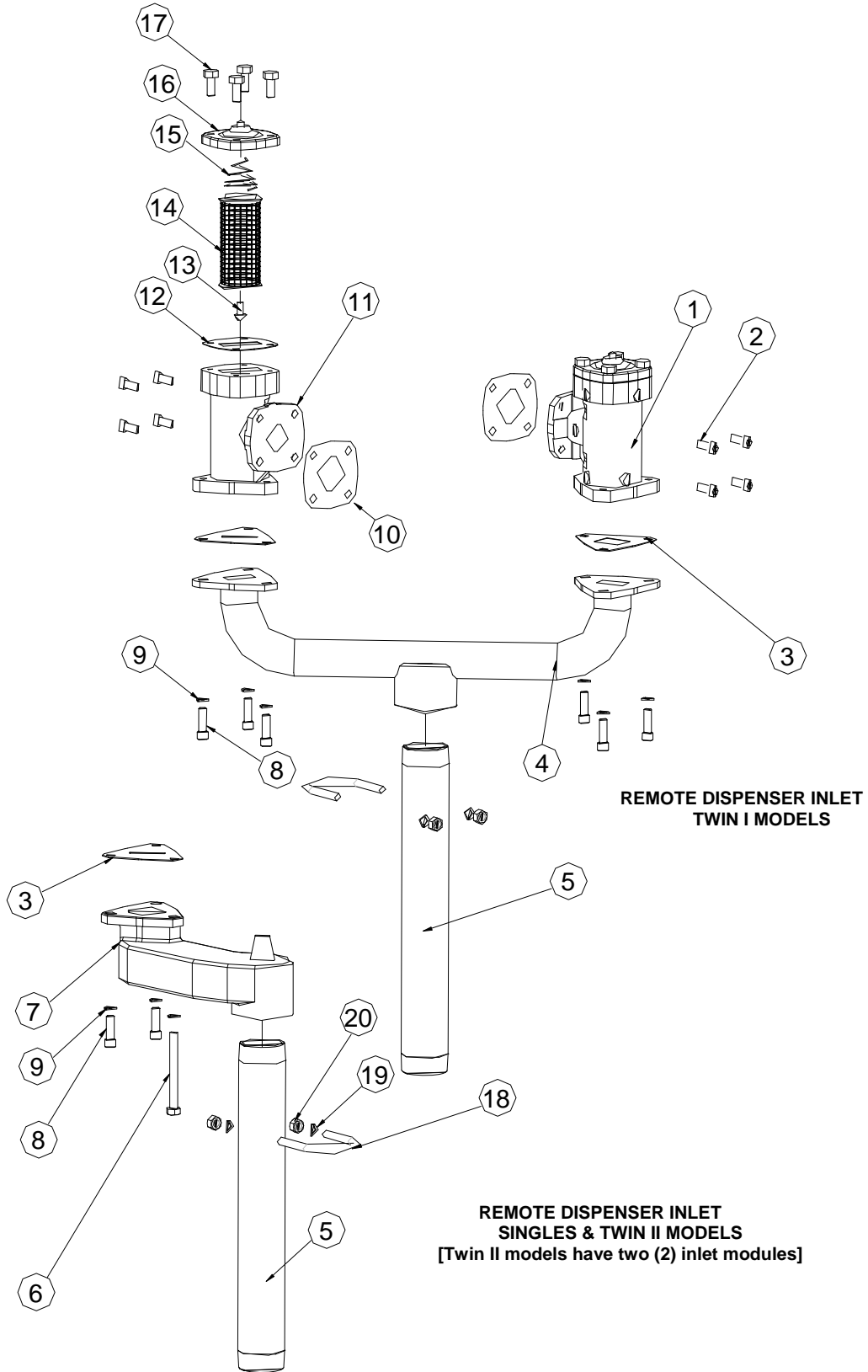
- Twin I HS Models (Select the valve based on fuel type; otherwise, under some conditions product may be forced out of the air elimination vent of the inactive side.) Gasoline – use p/n 001-305331-. Other than Gasoline – use p/n 002-305331-.
- Single, Twin I, & Twin II Models – Option (model suffix //M) - All Fuels: use p/n 001-305331-

8. Suction Pump Assembly (CPU)



Item No.	Part No.	Description
1	889938-001	Compact Pump, 2.5mm Orifice
2	WM001420-0001	Idler
3	004-121971-	Head Assembly
4	002-118864-	O-Ring, Head Seal
5	011-028695-	Rotor And Shaft Assembly
6	000-512353-	Pipe Plug
7	002-918623-	O-Ring, End Cap Seal
8	003-300302-	End Cap
9	WM000635-0001	Pump Cover
10	WM000611	Gasket, Cover
11	WM017958	Float, Lower Assembly
12	000-916231-	O-Ring, Lower Float Assembly
13	003-121701-	Lip Seal
14	004-118877-	Seal Cap, Bypass Valve
15	000-129885-	Gasket, Seal Cap
16	002-118875-	Cap, Bypass Valve
17	002-905871-	O-Ring, Bypass Valve
18	002-118838-	Bypass Valve
19	002-118824-	Spring, Bypass Valve
20	000-118857-	Flat Washer, Bypass Valve
21	000-118860-	Adjusting Screw
22	000-118861-	Hex Nut
23	WM001979	O-Ring
24	WM013808	Molded Cover
25	WM008785	Float, Upper
26	WM017874	Float Guide
27	WB000260-0001	SHCTT M6x16mm
28	000-129881-	Orifice, 2.5mm Air Eliminator
29	WM001438	Plug
30	WM002217	O-Ring
31	890543-001	Kit, .125 Diam. Lockpin

9. Remote Dispenser Inlet

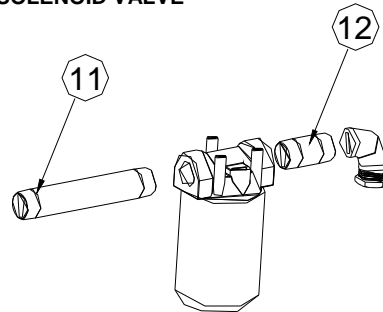


Item No.	Part No.	Description	Quantity per Model		
			Single	Twin I	Twin II
1	000-201829-	ASSY, STRAINER	1	2	2
	001-201829-	ASSY, STRAINER, E Prefix			
2	000-511096-	SCR 5/16-18X7/8 HHC	4	8	8
3	889936-001	GASKET, STRAINER	1	2	2
4	889687-002	PIPE MANIFOLD TWI REMOTE	N/A	1	N/A
5	013-127756-500	NIPPLE 1-1/2 X 13-1/2" GALV.	1	1	2
	890873-013-500	NIPPLE 1-1/2 X 13-1/2" BLACK, E Prefix			
6	889903-001	SCR M8X1.25X80MM HHCSTZN	1	N/A	2
7	889901-001	CASTING, INLET, OFFSET	1	N/A	2
8	000-918621-	SCR, M8X22 HHC	2	6	4
9	000-902017-	WSHR LK, 5/16X1/8X1/16 SPL	3	6	6
10	000-129882-	GASKET, STRAINER OUTLET	1	2	2
11	000-047583-	CASTING, STRAINER BODY	1	2	2
	004-047583-	CASTING, STRAINER BODY, E Prefix			
12	000-118869-	GASKET	1	2	2
13	000-127441-	SPEC S#10X24	1	2	2
	002-127441-	SCREW #10x24 SS, E Prefix			
14	000-029362-	STRAINER ASSEMBLY	1	2	2
	0SS-029362-	STRAINER ASSEMBLY SS, E Prefix			
15	000-120529-	SPRING	1	2	2
	002-120529-	SPRING SS, E prefix			
16	000-200427-	COVER-STRAINER	1	2	2
	003-200427-	COVER-STRAINER, E Prefix			
17	000-918650-	SCREW, HHC M6 X 18mm	4	8	8
18	002-127422-	U-BOLT	1	1	2
19	000-902017-	WSHR LK 5/16 X 1/8 X 1/16 SPL	2	2	4
20	000-509584-	NUT 5/16-18 HXNTMSSTZN	2	2	4

10. Discharge

Suction pumps models, except the G6202P Twin I, do not include a solenoid valve unless equipped with the Two-Stage Solenoid Valve option (suffix W1). All remote dispenser models, and the G6202P Twin I suction pump, include the valve as standard.

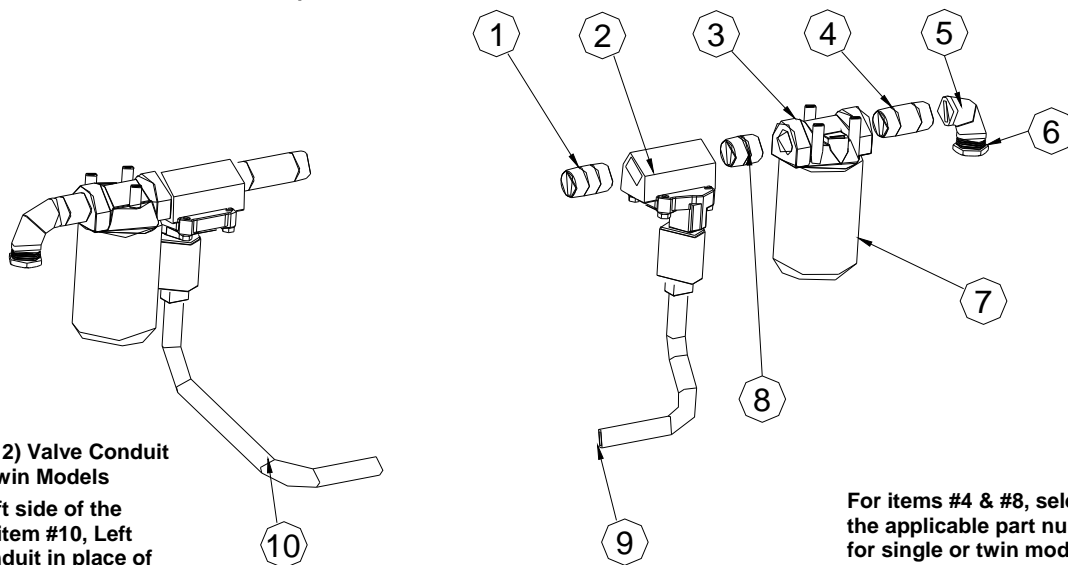
SINGLE & TWIN MODELS WITHOUT SOLENOID VALVE



For items #11 & #12, select applicable part number for single or twin model. Twin models have two assemblies.

For item #2, Solenoid Valve, select the applicable part number for 120VAC or 220VAC operation.

SINGLE & TWIN MODELS WITH SOLENOID VALVE



Left (Side 2) Valve Conduit for Twin Models

For the left side of the twin, use item #10, Left Valve Conduit in place of item #9, Right Valve Conduit. Valves & conduits on E Prefix models vary in appearance.

For items #4 & #8, select the applicable part number for single or twin model.

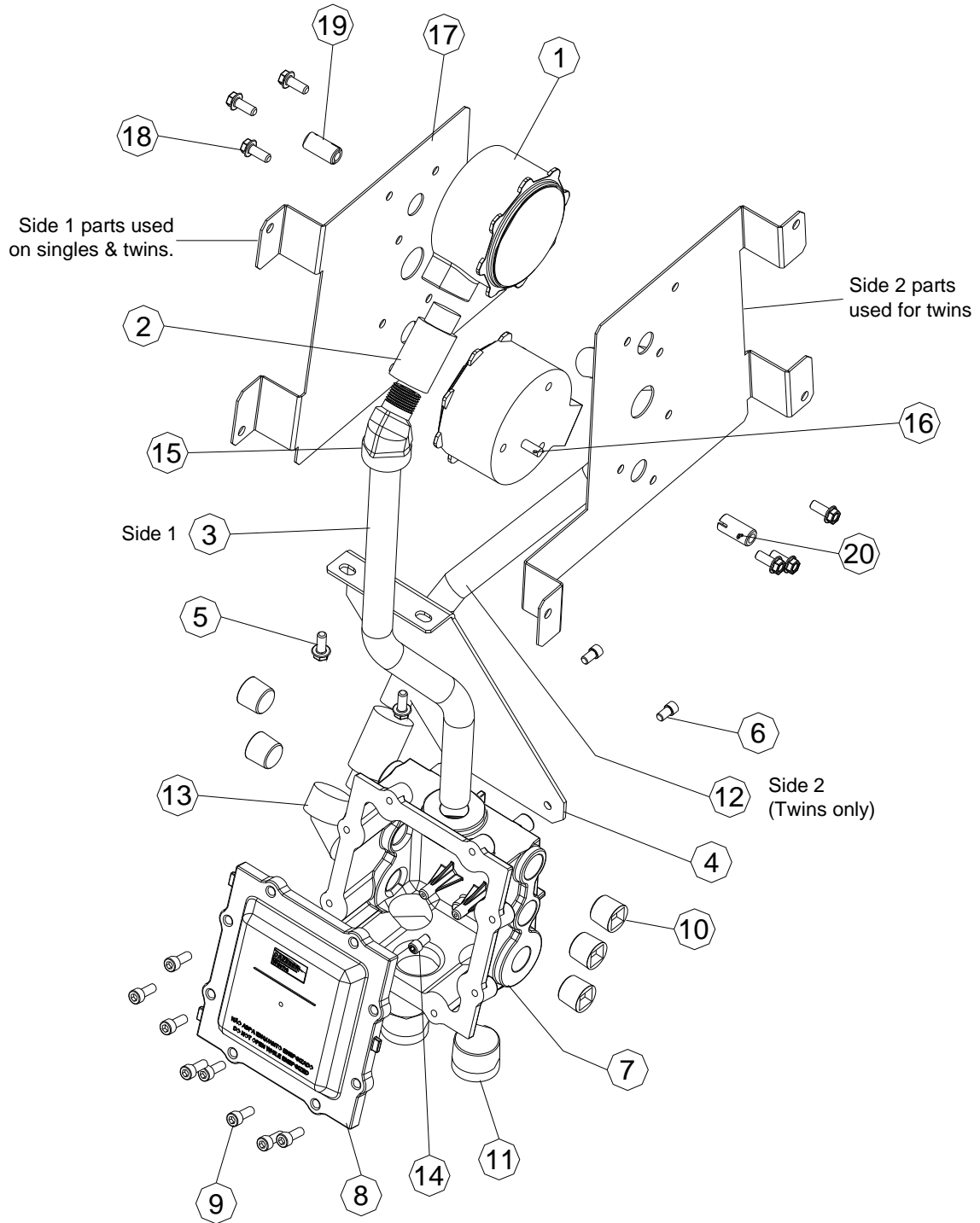
Twin models have two assemblies. For the left side (Side 2) of the twin, use item #10, Left Valve Conduit, shown in left inset in place of item #9, Right Valve Conduit (Side 1). Valves & conduits on E Prefix models vary in appearance.

Item No.	Part No.	Description	Quantity per Model			
			Models w/o Valve*		Models w/ Valve*	
			Single	Twin	Single	Twin
1	002-128063-	Nipple, Galv 1" NPT X 2"	N/A	N/A	1	2
	890872-002-000	Nipple, Black 1" NPT X 2", E85				
2	889845-001	Solenoid Valve 120V	N/A	N/A	1	2
	889845-002	Solenoid Valve 220V				
	890840-001	Solenoid Valve, 120V, E85				
3	888085-001	Filter Adapter	1	2	1	2
	888085-002	Filter Adapter, E85	N/A	N/A	1	2
4	002-128063-500	Nipple, Galv 1" N.P.T. X 2 ½"	N/A	N/A	N/A	2
	890872-002-500	Nipple, Black 1" N.P.T. X 2 ½", E85				
	007-128063-500	Nipple, Galv 1"NPT X 7 ½"	N/A	N/A	1	N/A
	890872-007-000	Nipple, Black 1"NPT X 7", E85				
5	889900-001	Elbow Galv, 1"NPT F/F	1	2	1	2
	889900-002	Elbow, Black, 1"NPT F/F, E85				
6	889899-001	Bushing, Galv 1" X ¾ NPT	1	2	1	2
	889899-002	Bushing, Black 1" X ¾ NPT, E85				
7	888084-001	Filter, 10 Micron, 400-10 H	1	2	1	2
	888084-002	Filter, 400BHA-01, HI BIO, E85	N/A	N/A	1	2
8	001-128063-500	Nipple, Galv 1 X 1-½"	N/A	N/A	N/A	1
	890872-001-500	Nipple, Black 1 X 1-½", E85				
	002-128063-500	Nipple, Galv 1" N.P.T. X 2 ½"	N/A	N/A	1	N/A
	890872-002-500	Nipple, Black 1" N.P.T. X 2 ½", E85				
9	889821-001	Conduit, Valve, Right SD1	N/A	N/A	1	1
	890901-001	Conduit, Valve, Right, SD1, E Prefix				
10	889822-001	Conduit, Valve, Left SD2	N/A	N/A	N/A	1
	890902-001	Conduit, Valve, Left, SD2, E85				
11	007-128063-	Nipple, 1"NPT X 7" Galv	1	N/A	N/A	N/A
	006-128063-	Nipple, 1"NPT X 6" Galv	N/A	1	N/A	N/A
12	007-128063-500	Nipple, 1"NPT X 7 ½"	1	N/A	N/A	N/A
	002-128063-500	Nipple, 1"NPT X 2 ½"	N/A	1	N/A	N/A

*Note: Suction pumps models, except the G6202P Twin I, do not include a valve unless equipped with the Two-Stage Solenoid Valve option (suffix W1). All remote dispenser models, and the G6202P Twin I suction pump, include the valve as standard.

11. Pulsers

11.1 G6200 Pulsar Assembly



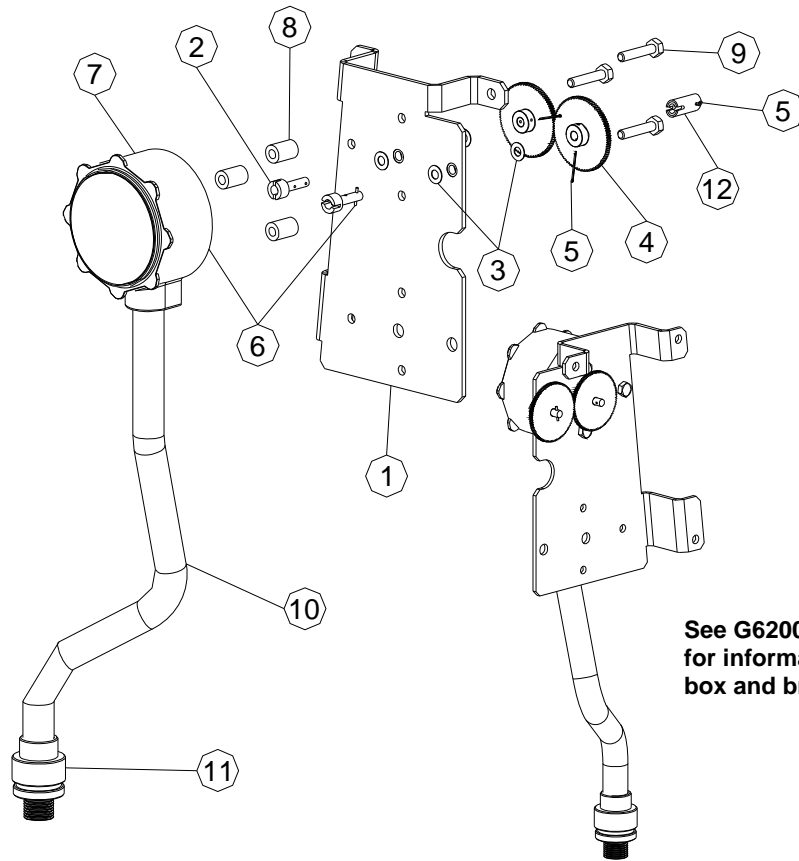
Item No.	Part No.	Description	Quantity per Model	
			Single	Twin
1	889848-001	10:1 Pulser* (Model Suffix "7A") – Prior to Serial # 83001A.	1	2
	890880-001	10:1 Pulser* (Model Suffix "7A") – Serial # 83001A and later.		
	889849-001	100:1 Pulser* (Model Suffix "7B") – Prior to Serial # 83001A.		
	890881-001	100:1 Pulser* (Model Suffix "7B") – Serial # 83001A and later.		
2	001-218941-	Expansion UNion	1	2
3	890904-001	Conduit, Pulser, Side 1, G6200	1	1
4	889843-001	Bracket, DC Junction Box	1	1
5	000-918513-	Screw, Shakeproof, TAP/R TH	2	2
6	002-918650-	HHCS M6 X 1.0 X 12MM	2	2
7	003-306177-	Jbox Body, 54 Cu In, UL	1	1
8	001-306180-	Jbox Cover, 54 Cu In	1	1
9	001-921053-	SHCS M6 X 1 X 16mm	8	8
10	000-508919-	1/2" Cntrsunk Pipe Plug, Z	6	5
11	000-509655-	Pipe Plug Sq Hd 1"-ZI	2	2
12	890905-001	Conduit, Pulser, Side 2, G6200	N/A	1
13	001-124856-	Elbow 90 Ded-M.F. Cond.	N/A	1
14	001-921551-	Screw, Ground M6X8MM Green	1	1
15	890884-001	Conduit Elbow, 45 Deg, M-F	1	1
16	890882-001	Pin, .06 Dia X .50 Zinc Plate Steel	1	2
17	890403-001	Plate, Pulser Mounting, G6200	1	2
18	890883-001	Screw ¼-20X3/8 HHESSTZN	3	6
19	890404-001	Coupling, Pulser	1	2
20	000-902179-	Pin M1/16X3/4 ZN Cotter	1	2

*Note: 10:1 pulsers may be identified by (2) black wires and a green ground.
100:1 pulsers may be identified by (1) red wire, (1) white wire, (1) black wire, and a green ground.

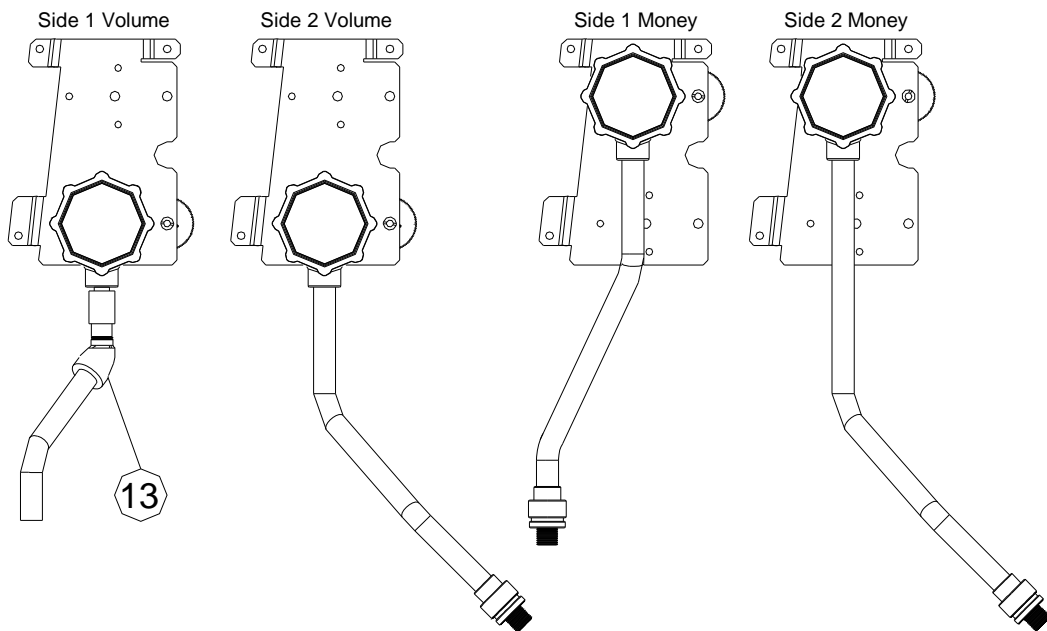
Complete Kits

Part No.	Description
889914-001	Pulser Assy, G6200, Single, 10:1, Volume
889914-003	Pulser Assy, G6200, Twin, 10:1, Volume
889914-002	Pulser Assy, G6200, Single, 100:1, Volume
889914-004	Pulser Assy, G6200, Twin, 100:1, Volume

11.2 G5200 Pulsar Assembly



See G6200 Pulsar Assembly
for information on junction
box and bracket parts.



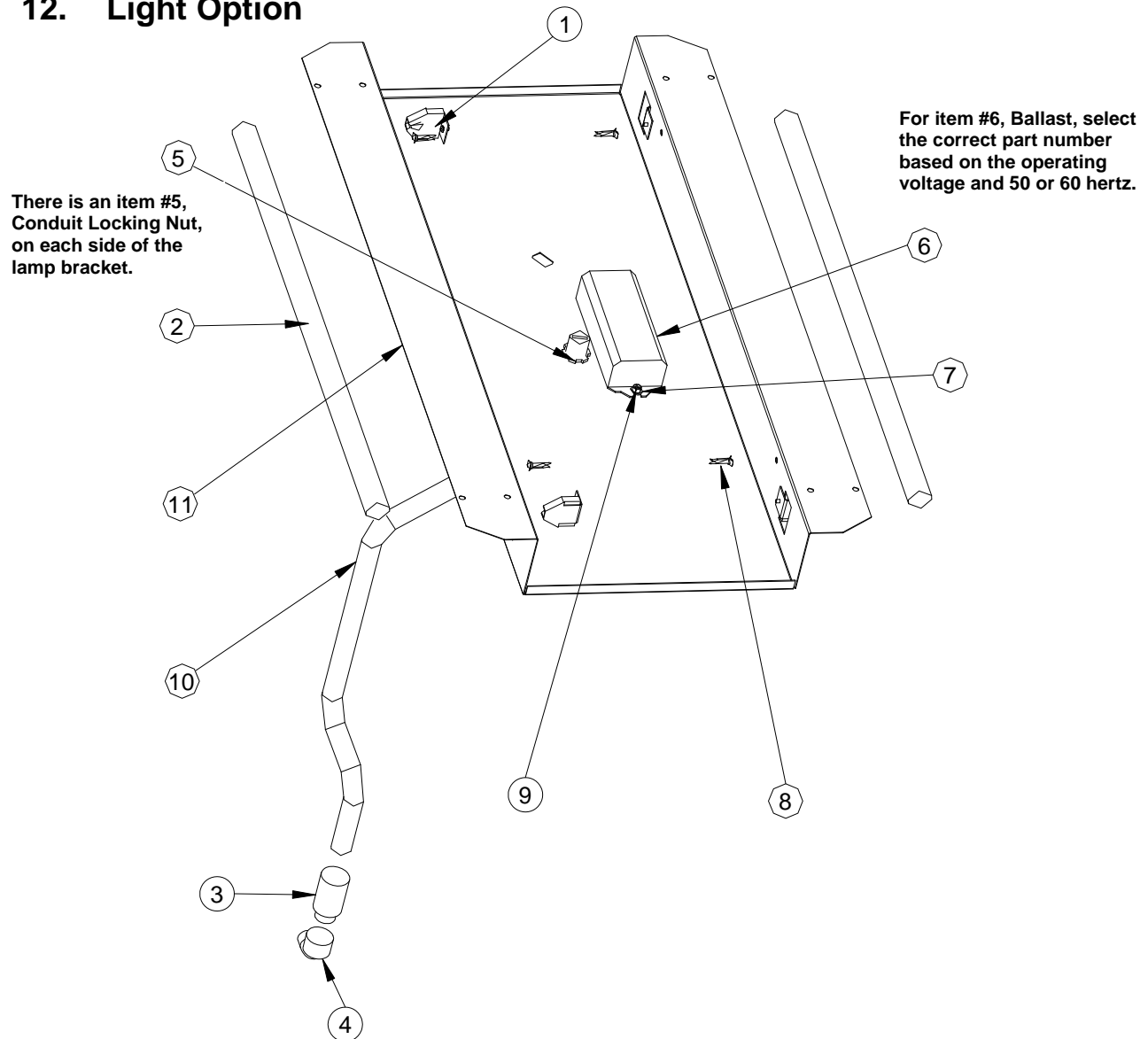
Item No.	Part No.	Description	Quantity per Model	
			Single	Twin
1	891799-001	Pulser Plate Assy, G5200 Volume	1	2
	891799-002	Pulser Plate Assy, G5200 Money	1	2
2	890877-001	Pulser Gear Shaft, G5200	2	4
3	002-122583-	Washer, Shim	4	8
4	891798-001-001	Gear, Pulser G5200	2	4
5	000-902179-	Pin M1/16X3/4 ZN Cotter	3	6
6	890882-001	Pin, .06 Dia X .50 Zinc Plate Steel	2	4
7	890880-001	10:1 Pulser* (Model Suffix 7A)	1	2
	890881-001	100:1 Pulser (Model Suffices 7B & 7C)	1	2
8	891797-001	Spacer, ¾ Long, Nylon	3	6
9	000-918764-	Screw, HHC ¼-20X1-1/4"	3	6
10	891792-001	Conduit, Pulser, G5200 SD1 Money	1	1
	891793-001	Conduit, Pulser, G5200 SD2 Money	N/A	1
	891794-001	Conduit, Pulser, G5200 SD1 Volume	1	1
	891795-001	Conduit, Pulser, G5200 SD2 Volume	N/A	1
11	000-122265-	Conduit Union, ½" M/F	1	2
12	890404-001	Coupling, Pulser	1	2
13	890884-001	Conduit, Elbow, 45 Deg, M-F	1	1
14	001-218941-	Expansion Conduit Union, ½ MF	1	1

Note: 10:1 pulsers may be identified by (2) black wires and a green ground.
100:1 pulsers may be identified by (1) red wire, (1) white wire, (1) black wire, and a green ground.
See G6200 Pulser Assembly for information on junction box and bracket parts.

Complete Kits

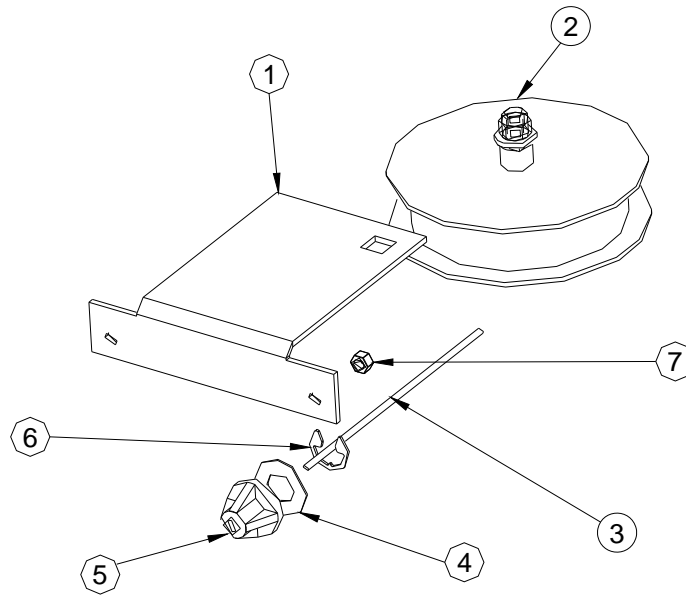
Part No.	Description
891800-001	Pulser Assy, G5200, Side 1, 10:1, Volume
891800-002	Pulser Assy, G5200, Side 2, 10:1, Volume
891800-003	Pulser Assy, G5200, Side 1, 100:1, Volume
891800-004	Pulser Assy, G5200, Side 2, 100:1, Volume
891800-005	Pulser Assy, G5200, Side 1, 100:1, Money
891800-006	Pulser Assy, G5200, Side 2, 100:1, Money

12. Light Option



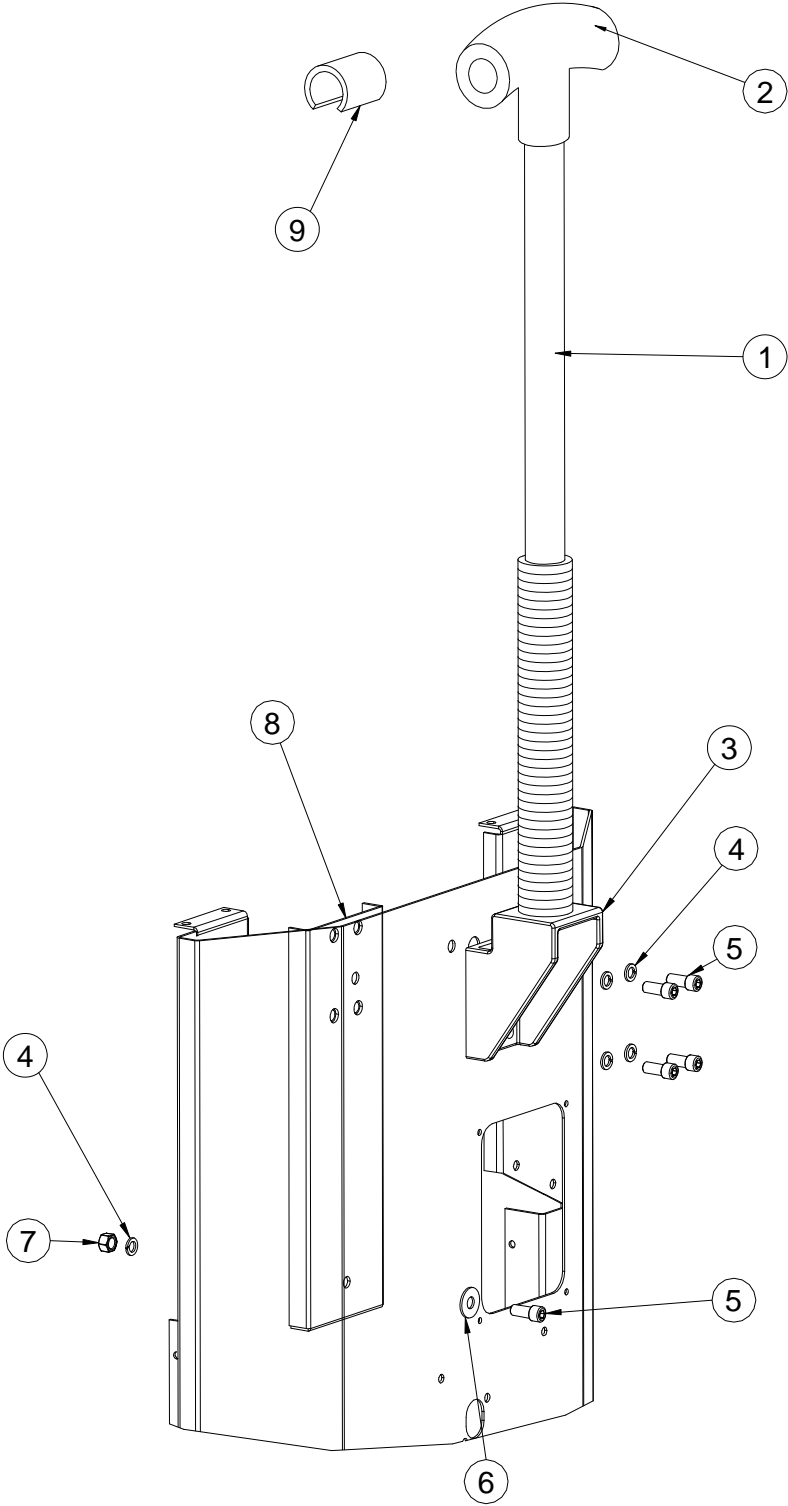
Item No.	Part No.	Description	Quantity per Dispenser
1	889853-001	Lamp Holder,HH726-W-2	4
2	000-126196-	Lamp	2
3	001-218941-	Expansion Union	1
4	001-124856-	Elbow 90 Deg-M.F. Cond.	1
5	005-129498-	Locknut, Conduit	2
6	889694-001	Ballast, 120/60	1
	889694-002	Ballast, 240/50	
	889694-003	Ballast, 240/60	
7	000-905245-	Washer 1/4 FWSTCD	2
8	000-918197-	Twistlok Press-In	4
9	889905-001	Keps Nut, 5MM	2
10	889933-003	Conduit Assy, Lamp	1
11	890907-001	Lamp Bracket	1

13. Internal Hose Retractor Option



Item No.	Part No.	Description	Quantity per Retractor
1	889243-001	Bracket, Reel	1
2	889551-001	Wire Reel W/ 8 1/2' Cable	1
3	003-126624-	Hose Retractor, Cable Nylon	1
4	001-921192-	Flatwasher ID 16mm X OD 30mm	1
5	001-301335-	Cable Guide	1
6	001-921175-	Retaining Ring	1
7	001-921088-	Nut, Hex M6 X 1 CAD Plate	2

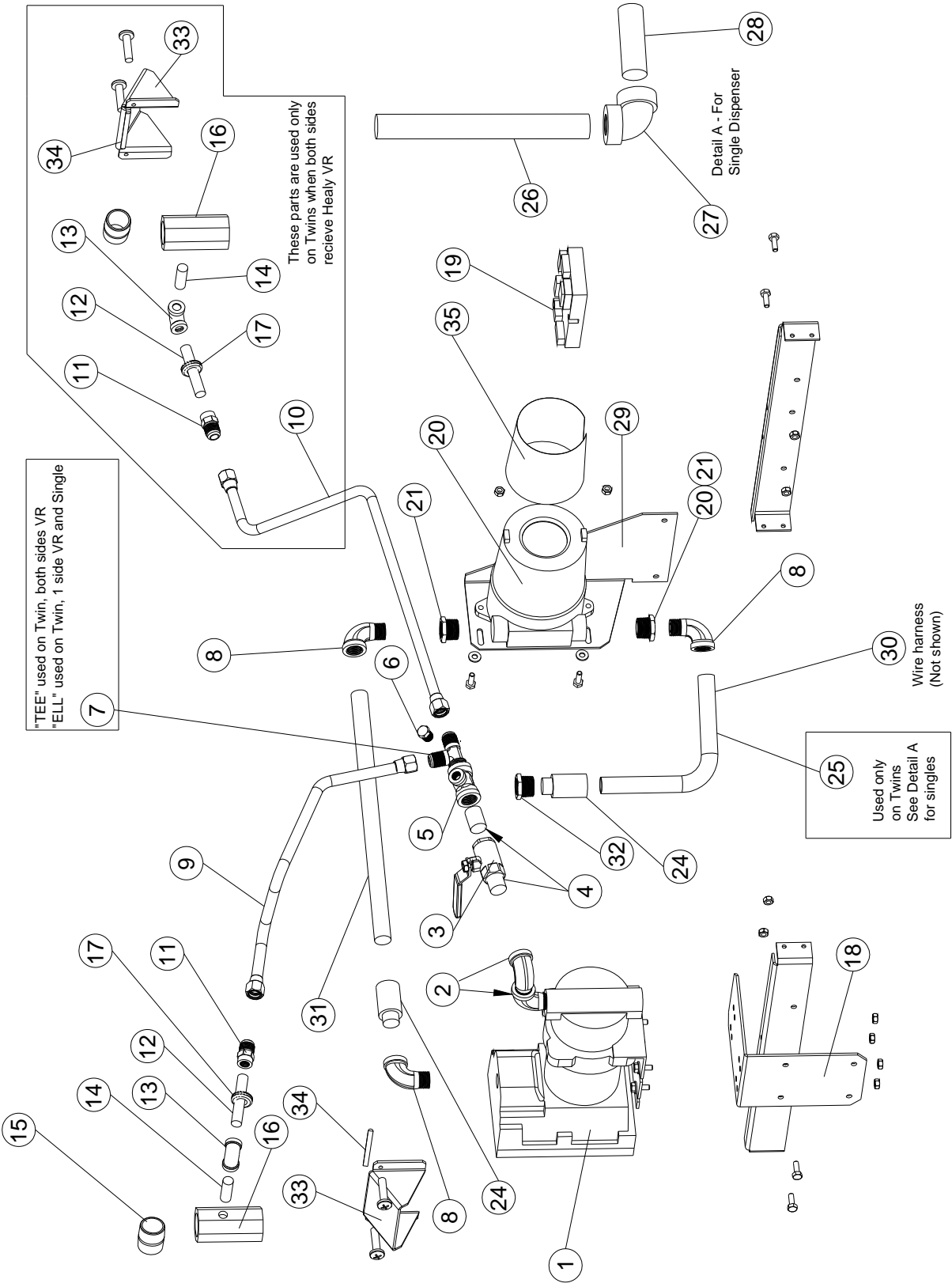
14. Hose Mast Option



Note: The complete hose mast kit is PN 889918-001 and includes the items below.

Item No.	Part No.	Description	Quantity per Hose Mast
1	002-921176-	RETRIEVER, HOSE MAST	1
2	W71921649	HOSE MAST CLAMP (Part of Item 1)	1
3	W71921462	HOSE MAST SUPPORT (Part of Item 1)	1
4	001-921341-	SPRING WASHER M8	5
5	000-918621-	SCREW, CAP HEX HEAD M8	5
6	001-921342-	WSHR FLAT M8 FWSTZN	1
7	001-921340-	HEXNUT M8	1
8	001-306042-	PLATE-MAST	1
9	001-921362-	REDUCING SLEEVE	1

15. Healy Vapor Recovery Option



Item No.	Part No.	Description	Quantity per Model		
			Single	Twin, One Side	Twin, Two Sides
1	890316-001	Healy Vacuum Pump	1	1	1
2	890808-001	Street El, ½" NPT Galv Iron	2	2	2
3	890809-001-125	Pipe Nipple, ½" NPT X 1.13"	2	2	2
4	890810-001	Ball Valve	1	1	1
5	890811-001	Tee, NPT, ½" X ¼" X ½"	1	1	1
6	002-118839-	Plug, ¼"	1	1	1
7	890812-001	Tee, ½" NPT X ½" Flare X ½" Flare	N/A	N/A	1
	890820-001	Elbow, ½" NPT X ½" Flare	1	1	N/A
8	001-124856-	Elbow 90 Deg – M/F Conduit	3	3	3
9	890410-001	Tube Assy, Right (Single & Twin Remote)	1	1	1
10	890411-001	Tube Assy, Left (Twin Remote)	N/A	N/A	1
11	890815-001	Straight Adapter, ¼" NPT X ½" Flare	1	1	2
12	890813-001	Pipe Nipple, ¼" NPT X 3"	1	1	2
13	890816-001	Elbow, ¼" NPT X ¼" NPT	1	1	2
14	890813-001-500	Pipe Nipple, ¼" NPT X 1.5"	1	1	2
15	001-128063-500	Nipple 1 X 1-1/2"	1	1	2
16	890822-001	Healy VR Adapter CX6-A	1	1	2
17	890817-001	Grommet, Rubber 9/16" ID	1	1	2
18	890463-001	Bracket, Healy Vacuum Pump	1	1	1
19	890818-001	Control, Healy MC100	1	1	1
20	890825-001	Jbox	1	1	1
21	890823-001	Bushing, ¾" NPT X 1/2" NPT	2	2	2
24	001-124856-	Expansion Union	2	2	2
25	890407-001	Conduit, J-Box to Main J-Box, Twin	N/A	1	1
26	004-128005-500	Conduit, ½' X 4-½"	1	N/A	N/A
27	000-508995-	Elbow F/F ½"	1	N/A	N/A
28	002-128005-	Conduit ½' X 2'	1	N/A	N/A
29	890464-001	Bracket, Healy, J-Box	1	1	1
30	890826-001	Harness	1	1	1
31	015-128005-	Conduit, ½" X 15"	1	1	1
32	889082-001	Bushing, 1 X ½" Reducer	1	1	1
33	890398-001	Nozzle Hood, Reliance VR	1	1	2
34	005-129830-	Gasket for Nozzle Hood	1	1	2
35	890831-002	Fish Paper, 5" X 12"	1	1	1
	012-128243-	Decal, Nozzle Label, Healy VR	1	1	2
	890830-001	Decal, Healy EVR Notice	1	1	1
	000-920849-	Healy EVR I/O Manual	1	1	1

This page intentionally blank

PARTS MANUAL

Reliance™ G5200 & G6200 Dispensers

© 2017 Wayne Fueling Systems.
Printed in the United States of America.

This manual and any software described herein are furnished under the terms of sale or other applicable contract including any license, and may be used or copied only in accordance with those terms.

No part of this publication may be electronically or mechanically reproduced, stored in a retrieval system, or transmitted, in any form or by any means, except as permitted by such terms. Translation of this material to another language without express written permission from Wayne Fueling Systems is prohibited.

This publication is intended for informational purposes only and this material is subject to change without notice. Wayne Fueling Systems has not made, and does not make, any representations or warranties of any kind, expressed or implied, with respect to any information in the publication, including warranty as to the accuracy, correctness, or completeness of any information. Wayne Fueling Systems shall not be responsible or liable for any damages or losses that occur as a result of the receipt and/or use of the information contained herein.

Wayne and the Wayne logo are trademarks of registered trademarks of Wayne Fueling Systems in the United States and other countries. Other names are for informational purposes and may be trademarks of their respective owners.



PROTECT YOUR
WARRANTY AND
REGULATORY
CERTIFICATIONS

Insist on Wayne Genuine
Parts for all equipment
repairs and upgrades.

**Wayne is located at 3814 Jarrett Way, Austin TX 78728.
Wayne's general telephone number is (512) 388-8311.**

This product complies with Part 15 of the FCC rules and regulations. Operation is subject to the following two conditions: (1) This product may not cause harmful interference, and (2) this product must accept any interference received, including interference that may cause undesired operation.

Note: This equipment has been tested and found to comply with the limits for a Class A digital device as set forth in Part 15 of the FCC Rules. Those limits are designed to provide reasonable protection against harmful interference when the equipment is operated in a commercial environment. This equipment generates, uses, and can radiate radio frequency energy, and if it is not installed and used in accordance with the instruction manual, it may cause harmful interference to radio communications. Operation of this equipment in a residential area is likely to cause harmful interference, in which case you will be required to correct the interference at your own expense.

Modifications: Any modifications made to this product that are not approved by Wayne Fueling Systems could void your authority to operate this equipment.



Wayne Manufacturing Centers

Wayne U.S.

Wayne Fueling
Systems, LLC
3814 Jarrett Way
Austin, TX 78728
USA
Sweden

Wayne Sweden

Wayne Fueling
Systems Sweden AB
Hanögatan 10,
Box 50559
SE-202 15 Malmö
China

Wayne China

Dresser Wayne Fuel
Equipment
(Shanghai) Co., Ltd
1221 Dong Lu Road
Pudong, Shanghai
Brasil

Wayne Brazil

Wayne Industria e
Comercio Ltda.
Estrada do Timbó
126 - Higienópolis
Rio de Janeiro,