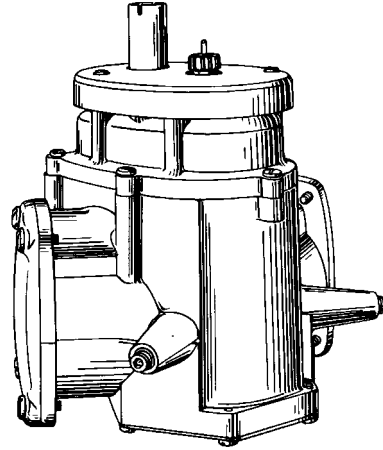


PARTS

2-Piston Meter Series Parts Manual



Wayne

DRESSER

2-Piston Meter Series Parts Manual

This manual lists parts for meter assemblies which are common to all 1/Vista and Vista dispensers.

TABLE OF CONTENTS

<u>Title</u>	<u>Page</u>
How to Locate Parts	iv
How to Order Parts	v
How to Contact Wayne	vi
List of Tables	vii
List of Figures	vii
Warranty and Limitation of Remedy and Liability	Inside Back Cover
FCC Warning	Back Cover

HOW TO LOCATE PARTS

How to locate part number:

- Find the Meter Model Number on the Serial Plate on the back of the Meter Assembly.
- Locate your Meter Assembly in the List of Tables and turn to the page indicated.
- Use the Meter Assembly Drawing to locate the desired Part and corresponding Item Number on the Drawing.
- Use the Item* Number on the drawing to find the specific Part Number, Quantity and Description in the Meter Assembly Parts Table.
- You may be referred to another Table to locate the specific Part Number for your assembly.

*The item numbers shown on the illustrations are intended only to locate the part number and description in the accompanying table of parts. **Do not order parts by item number.**

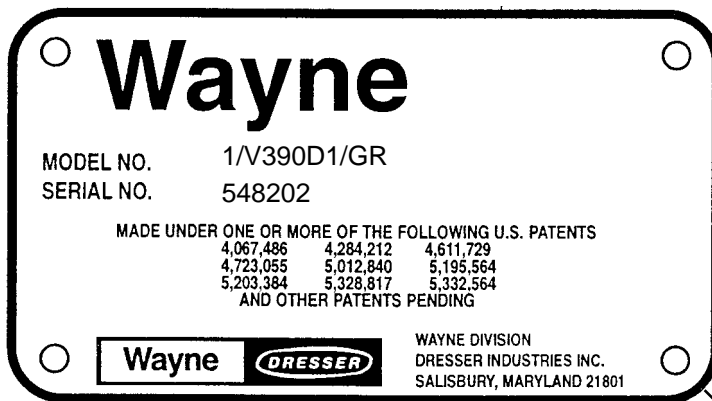
HOW TO ORDER PARTS

To insure correct and prompt delivery of parts, furnish the serial number, model number and any existing code number on the dispenser serial plate, located on the left front base of the dispenser, a sample of which is shown below.

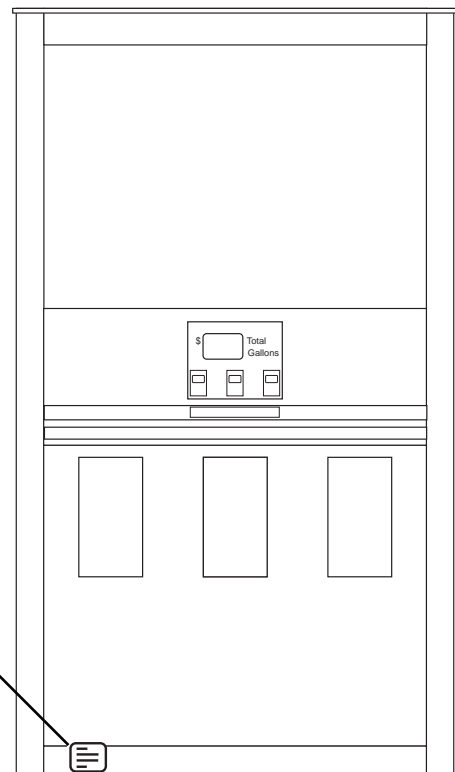
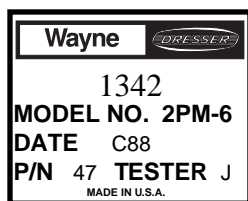
When ordering parts supply the following information:

- **Serial number of dispenser and meter.**
- **Model number of dispenser and meter.**
- **Part number.**
- **Description of the part.**
- **Quantity desired.**

Dispenser Serial Plate



Meter Serial Plate



NOTE: The Model and Serial Numbers above are examples only. 1/V390 Shown.

HOW TO CONTACT WAYNE

WAYNE TECHNICAL SUPPORT	1-800-926-3737
WAYNE SERVICE PARTS DEPT.	PH: 1-512-218-6547
	FAX ORDERS: 1-410-546-6885
WARRANTY AND CONTRACT PARTS	FAX: 1-410-546-6846

NOTE: When ordering parts with particular company specifications such as doors, advertising panels and dial faces, please call our Service Parts Department at 1-512-218-6547 with specific dispenser model number and serial number. All warranty parts are to be ordered through local distributors.

LIST OF TABLES

<u>TITLE</u>	<u>PAGE</u>
Table 1. 2PM-6 Series Meter Assembly	2
Table 2. 46378-004 Meter Chart 2PM-6 Series	5
Table 3. 7026-C Meter Chart 2PM-6 Series	7
Table 4. 2PM-5 Series Meter Assembly	10
Table 5. 2PM-4 Series Meter Assembly	14
Table 6. 2PM-4 & 5 Series Gearing Chart	16

LIST OF FIGURES

<u>TITLE</u>	<u>PAGE</u>
Figure 1. 2PM-6 Series Meter Assembly	1
Figure 2. 2PM-5 Series Meter Assembly	9
Figure 3. 2PM-4 Series Meter Assembly	13

TD00424-A
2PM-6 Meter

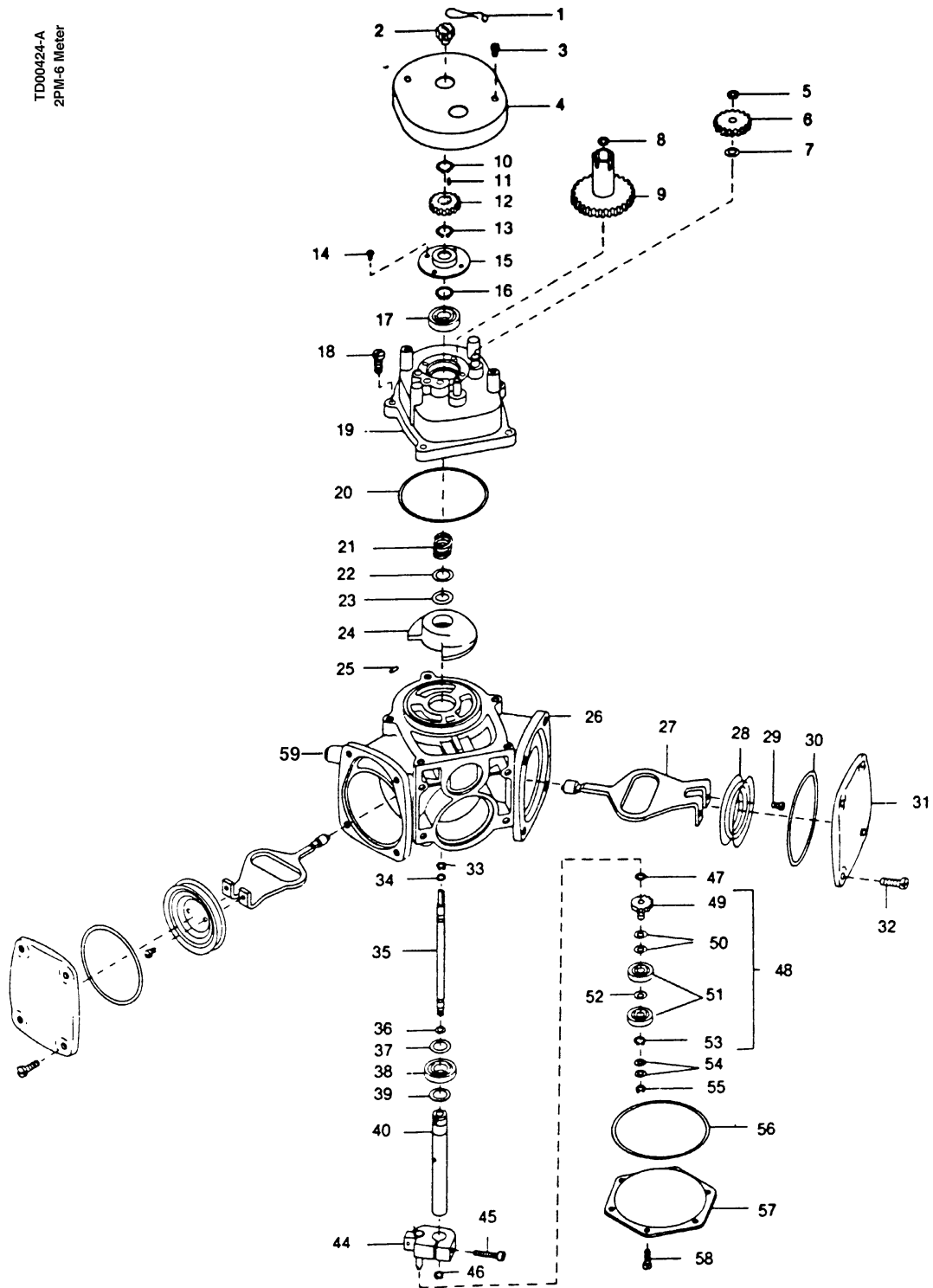


FIGURE 1. 2PM-6 SERIES METER ASSEMBLY

TABLE 1. 2PM-6 SERIES METER ASSEMBLY

Item No.	Part No.	Qty.	Description
1	-905410-	1	SEAL WIRE&LEAD
2	-028261-	1	ADJ KNOB
3	-513708-	2	TTWA S#10-24X1/2,ZINC
4	-200543-	1	COVER,GEAR
5	-907135-	1	RING M#5100-25H TRUARC
6	REF	1	IDLER GEAR (SEE TABLE 3.)
7	001-122583-	1	SHIM W.252X15/32X.031 SS
8	-905861-	1	RING M#5105-25-20 TRUARC
9	REF	1	DRIVE GEAR (SEE TABLE 3.)
10	-905267-	3	RING M#5100-62 RETRTRUARC
11	-907235-	1	PIN M3/32X1/4 HD SPIROL
12	REF	1	PINION GEAR (SEE TABLE 3.)
13	-905267-	1	RETAINING RING
14	-513706-	4	TTWAS 10-32X3/8 INDENTED
15	002-029723-	1	SEAL UPPER
16	-905267-	1	RETAINING RING
17	-120414-	1	BEARING
18	-513709-	5	TT S#12-24X7/8
19	REF	1	ASSY-CAP & STUDS (SEE TABLE 3.)
20	REF	1	CAP & STUDS ASSY "O" RING (SEE TABLE 2.)
21	-124950-	1	VALVE SPRING
22	-124951-	1	FLAT W.640X.797 2PM #20SS
23	REF	1	VALVE "O" RING (SEE TABLE 2.)
24	003-037871-	1	VALVE TWO PISTON METER
25	001-921045-	1	PIN,DOWEL .1252 DIA X5/16
26	REF	1	SEAT,VALVE ASSY-BDY&LNRS (SEE TABLE 2.)
27	-028905-	2	YOKE & BUSHING ASSY
28	-200040-	2	PISTON ASSY
29	-513066-	4	FIHM S#10-32X5/16W/WASHER
30	REF	2	CYLINDER COVER "O" RING (SEE TABLE 2.)
31	003-038765-	2	COVER - CYL. CAD PLATE
32	-918452-	4	WAHH SCREW 1/4-20 X 1/2
33	-907135-	1	RING M#5100-25H TRUARC
34	-REF-	1	RING M#5100-25H TRUARC (SEE TABLE 2.)
35	-REF-	1	ADJ. GEAR ROD (SEE TABLE 2.)
36	-REF-	1	ADJ. GEAR ROD "O" RING (SEE TABLE 2.)
37	002-916405-	1	SEAL,BLOCK VEE
38	-120414-	1	BEARING
39	-120413-	1	SPACER
40	2-37898	1	SHAFT
44	-122662-	1	PIN & CRANK ARM ASSY (SEE TABLE 2.)
	-29801-	1	CRANK ARM
	-122959-	1	PIN
	2-122662-	1	PIN & CRANK ARM ASSY (SEE TABLE 2.)
	-2-29801-	1	CRANK ARM
	-122959-	1	PIN
45	REF	1	1/4" SCREW (SEE TABLE 2.)
46	-907135-	2	RETAINING RING

TABLE 1. 2PM-6 SERIES METER ASSEMBLY, continued

Item No.	Part No.	Qty.	Description
47	1-122558	AR	.015 SPACER
	2-122558	AR	.010 SPACER
48	-122621-	1	CROSS HEAD ASSY (INCLUDES ITEM NOS. 49 THRU 53)
49	-029712-	1	GEAR & ECCENTRIC BUSHING
50	1-122558-	AR	.015 SPACER
	2-122558-	AR	.010 SPACER
51	122552-	2	BALL BEARING
52	2-122558-	AR	.010 SPACER
53	-907134-	1	RETAINING RING
54	002-122583-	2	SHIM W.252X15/32X.015 SS
55	-907135-	1	RING M#5100-25H TRUARC
56	REF	1	CASE & COVER "O" RING (SEE TABLE 2.)
57	-200549-	1	PLATE ACESS
58	002-513709-	6	SCREW - HWH #12-24X1/2 TT
59	-512431-	2	PLUG M1/8 NPT SOCKETPIPE

TABLE 2. 46378-004 METER CHART 2PM-6 SERIES

Item No.				40	34 & 36	44	45	35	56	30	19	23	26
Measure	Ass'y	Model	Meter Assy	Shaft & Crank Arm Assy	Adj. Gear Rod "O" Ring	Pin & Crank Arm Assy	1/4" Screw	Adj. Gear Rod	Case Cover "O" Ring	Cylinder Cover "O" Ring	Cap & Studs Assy "O" Ring	Valve "O" Ring	Body & Valve Seat Assy
Standard U.S.	46378	2PM-6-R	46378-004	29726	2-120411	122662	512488	37897	120793	120406	126270	120401	1-39309
Hi-Speed Metric "A"	1-39310	2PM-6-1	46378-004	29726	2-120411	122662	512488	37897	120793	120406	126270	120401	1-39309
Standard Imperial	2-39310	2PM-6-2	46378-004	29726	2-120411	122662	512488	37897	120793	120406	126270	120401	1-39309
Standard Metric "E"	3-39310	2PM-6-3	46378-004	29726	2-120411	122662	512488	37897	120793	120406	126270	120401	1-39309
Blender U.S.	4-39310	2PM-6-4	46378-004	29726	2-120411	122662	512488	37897	120793	120406	126270	120401	1-39309
Standard Metric "E" Thailand	16-39310	2PM-6-16	8-46378-004	5-29726	2-120411	122662	512488	2-37897	120793	120406	126270	120401	1-39309
BEC-2A Pulser	23-39310	2PM-6-23	46378-004	29726	2-120411	122662	512488	37897	120793	120406	126270	120401	1-39309
BEC-2A Pulser Imperial	35-39310	2PM-6-35	46378-004	29726	2-120411	122662	512488	37897	120793	120406	126270	120401	1-39309
BEC-2A Pulser Plated body, screw seat	47-39310	2PM-6-47	5-46378-004	3-29726	3-120411	2-122662	2-512488	37897	3-120793	120406	126270	120401	1-39309
SC-82 Metric	48-39310	2PM-6-48	46378-004	29726	2-120411	122662	512488	37897	120793	120406	126270	120401	1-39309
BEC-2A Pulser	49-39310	2PM-6-49	46378-004	29726	2-120411	122662	512488	37897	120793	120406	126270	120401	1-39309
Hi Capacity Truck Stop	52-39310	2PM-6-52	46378-004	29726	2-120411	122662	512488	37897	120793	120406	126270	120401	1-39309
SC-82 Metric	53-39310	2PM-6-53	46378-004	29726	2-120411	122662	512488	37897	120793	120406	126270	120401	1-39309
SC-82 Metric	57-39310	2PM-6-57	46378-004	29726	2-120411	122662	512488	37897	120793	120406	126270	120401	1-39309
SC-82 Metric	61-39310	2PM-6-61	46378-004	29726	2-120411	122662	512488	37897	120793	120406	126270	120401	1-39309
Standard Metric "E"	63-39310	2PM-6-63	8-46378-004	5-29726	2-120411	122662	512488	2-37897	120793	120406	126270	120401	1-39309
SC-82 Metric	65-39310	2PM-6-65	8-46378-004	5-29726	2-120411	122662	512488	2-37897	120793	120406	126270	120401	1-39309

TABLE 2. 46378-004 METER CHART 2PM-6 SERIES

Item No.				40	34 & 36	44	45	35	56	30	19	23	26
Measure	Ass'y	Model	Meter Assy	Shaft & Crank Arm Assy	Adj. Gear Rod "O" Ring	Pin & Crank Arm Assy	1/4" Screw	Adj. Gear Rod	Case Cover "O" Ring	Cylinder Cover "O" Ring	Cap & Studs Assy "O" Ring	Valve "O" Ring	Body & Valve Seat Assy
SC-82 Metric	66-39310	2PM-6-66	46378-004	29726	2-120411	122662	512488	37897	120793	120406	126270	120401	1-39309
Standard Metric "E"	68-39310	2PM-6-68	4-46378-004	4-29726	5-120411	122662	512488	37897	4-120793	4-120406	4-126270	5-120401	11-39309
No Output Gearing	69-39310	2PM-6-69	6-46378-004	4-29726	5-120411	122662	512488	37897	4-120793	4-120406	4-126270	5-120401	11-39309
No Output Gearing	70-39310	2PM-6-70	9-46378-004	2-29726	3-120411	2-122662	512488	37897	120793	120406	126270	5-120401	1-39309
Standard Metric "E"	71-39310	2PM-6-71	4-46378-004	4-29726	5-120411	122662	512488	37897	4-120793	4-120406	4-126270	5-120401	11-39309
SC-82 Metric	72-39310	2PM-6-72	7-46378-004	29726	2-120411	122662	512488	37897	120793	120406	126270	5-120401	1-39309
No Output Gearing	73-39310	2PM-6-73	9-46378-004	2-29726	3-120411	2-122662	512488	37897	120793	120406	126270	5-120401	1-39309
Standard Metric "E"	74-39310	2PM-6-74	4-46378-004	4-29726	5-120411	122662	512488	37897	4-120793	4-120406	4-126270	5-120401	11-39309
Standard Metric "E"	75-39310	2PM-6-75	4-46378-004	4-29726	5-120411	122662	512488	37897	4-120793	4-120406	4-126270	5-120401	11-39309
Hi Capacity Truck Stop	76-39310	2PM-6-76	46378-004	29726	2-120411	122662	512488	37897	120793	120406	126270	120401	1-39309
SC-82 Metric	77-39310	2PM-6-77	46378-004	29726	2-120411	122662	512488	37897	120793	120406	126270	120401	1-39309
SC-82 Metric	78-39310	2PM-6-78	46378-004	29726	2-120411	122662	512488	37897	120793	120406	126270	120401	1-39309

TABLE 3. 7026-C METER CHART 2PM-6 SERIES

Item No.			6	9	12	19	Notes
Measure	Ass'y	Model	Idler	Drive	Pinion	Cap	Revolutions
Standard U.S.	46378	2PM-6-R	29906	29914	29907	1-38770	4 Per gallon at coupling
Hi-Speed Metric "A"	1-39310	2PM-6-1	200066	200067	200065	4-38770	4 Per liter at coupling
Standard Imperial	2-39310	2PM-6-2	2200068	200069	124994	2-38770	4 Per Imp. Gal. at coupling
Standard Metric "E"	3-39310	2PM-6-3	2-200071	3-200072	2-200070	3-38770	4 Per liter at coupling
Blender U.S.	4-39310	2PM-6-4	None	200074	200073	6-38770	8 Per gallon at coupling
Standard Metric "E" Thailand	16-39310	2PM-6-16	2-200071	3-200072	2-200070	3-38770	4 Per liter at coupling
BEC-2A Pulser	23-39310	2PM-6-23	None	2-300206	201068	19-38770	10.72 Per Gal. at coupling
BEC-2A Pulser Imperial	35-39310	2PM-6-35	None	7-200800	3-201068	12-38770	10.72 Per Imp. Gal. at coupling
BEC-2A Pulser Plated body, screw seat	47-39310	2PM-6-47	None	2-300206	201068	19-38770	10.72 Per Gal. at coupling
SC-82 Metric	48-39310	2PM-6-48	None	2-300206	2-201068	19-38770	10.72 Per liter at coupling
BEC-2A Pulser	49-39310	2PM-6-49	None	2-300206	201068	19-38770	10.72 Per gal. at coupling
Hi Capacity Truck Stop	52-39310	2PM-6-52	None	9-200800	201068	12-38770	10.72 Per gal. at coupling
SC-82 Metric	53-39310	2PM-6-53	None	2-300206	2-201068	19-38770	10.72 Per liter at coupling
SC-82 Metric	57-39310	2PM-6-57	None	2-300206	2-201068	19-38770	10.72 Per liter at coupling
SC-82 Metric	61-39310	2PM-6-61	None	2-300206	2-201068	19-38770	10.72 Per liter at coupling
Standard Metric "E"	63-39310	2PM-6-63	2-200071	3-200072	2-200070	3-38770	4 Per liter at coupling
SC-82 Metric	65-39310	2PM-6-65	None	2-300206	2-201068	19-38770	10.72 Per liter at coupling

TABLE 3. 7026-C METER CHART 2PM-6 SERIES

Item No.			6	9	12	19	Notes
Measure	Ass'y	Model	Idler	Drive	Pinion	Cap	Revolutions
SC-82 Metric	66-39310	2PM-6-66	None	2-300206	2-201068	19-38770	10.72 Per liter at coupling
Standard Metric "E"	68-39310	2PM-6-68	200071	2-200072	200070	22-38770	2 Per liter at coupling
No Output Gearing	69-39310	2PM-6-69	None	None	200070	23-38770	
No Output Gearing	70-39310	2PM-6-70					
Standard Metric "E"	71-39310	2PM-6-71	200071	4-200072	200070	22-38770	2 Per liter at coupling
SC-82 Metric	72-39310	2PM-6-72	None	2-300206	2-201068	19-38770	10.72 Per liter at coupling
No Output Gearing	73-39310	2PM-6-73					
Standard Metric "E"	74-39310	2PM-6-74	2-200071	3-200072	2-200070	25-38770	2 Per liter at coupling
Standard Metric "E"	75-39310	2PM-6-75	2-200071	5-200072	2-200070	25-38770	2 Per liter at coupling
Hi Capacity Truck Stop	76-39310	2PM-6-76	None	9-200800	201068	12-38770	10.72 Per Gal. at coupling
SC-82 Metric	77-39310	2PM-6-77	None	2-300206	2-201068	19-38770	10.72 Per liter at coupling
SC-82 Metric	78-39310	2PM-6-78	None	2-300206	2-201068	19-38770	10.72 Per liter at coupling

TD00425-A
2PM-4, 5 Meter

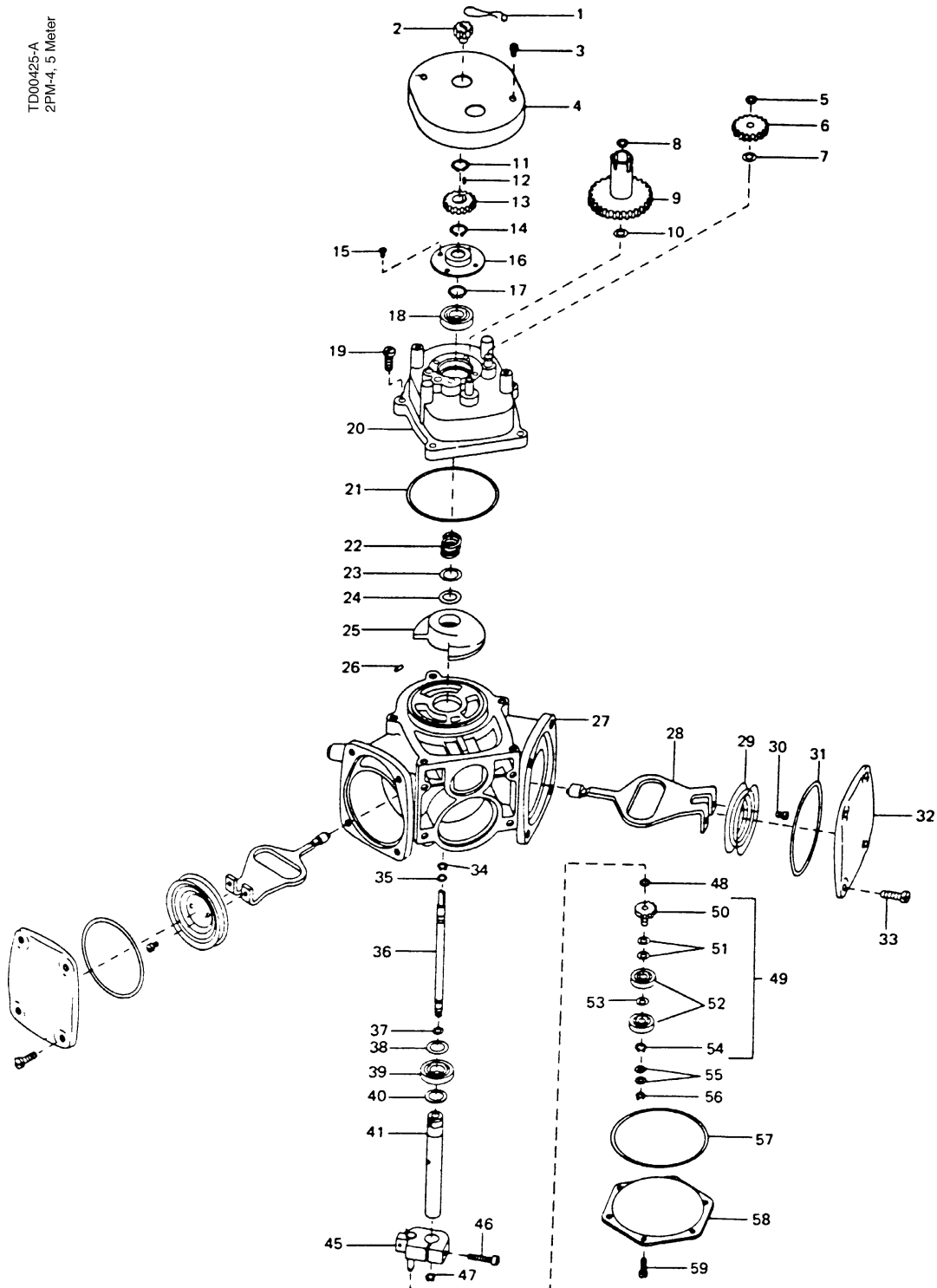


FIGURE 2. 2PM-5 SERIES METER ASSEMBLY

TABLE 4. 2PM-5 SERIES METER ASSEMBLY

Item No.	Part No.	Qty.	Description
1	905410	1	SEAL WIRE
2	28261	1	ADJUSTING KNOB
3	513706	2	TAPTITE SCREW #10-32 X 3/8
4	200543	1	GEAR COVER
5	907135	1	RETAINING RING
6	REF.	1	IDLER GEAR (SEE TABLE 6.)
7	1-122583	1	IDLER GEAR WASHER
8	905861	1	RETAINING RING
9	REF.	1	DRIVE GEAR (SEE TABLE 6.)
10	120419	1	DRIVE GEAR WASHER
11	905267	1	RETAINING RING
12	907235	1	SPIROL PIN
13	REF.	1	PINION GEAR (SEE TABLE 6.)
14	905267	1	RETAINING RING
15	513706	4	TAPTITE SCREW #10-32 X 3/8
16	29723	1	SHAFT SEAL
17	905267	1	RETAINING RING
18	120414	1	BEARING
19	513709	5	TAPTITE SCREW #12-24 X 7/8
20	REF.	1	ASS'Y-DOME (SEE TABLE 6.)
	44722	1	DOMES
	126481	1	DRIVE GEAR STUD
	124980	1	IDLER GEAR STUD
21	126270	1	"O" RING
22	124950	1	VALVE SPRING
23	124951	1	SHIM WASHER
24	120401	1	"O" RING
25	37871	1	VALVE
26	120400	1	VALVE PIN
27	1-38766	1	ASS'Y-BODY LINING & VALVE SEAT
	512431	2	PLUG 1/8 SOCKET HD.
28	28905	2	ASS'Y-YOKE AND BUSHING
29	200040	2	PISTON
30	513066	4	F.W.H. SCREW #10-32 X 5/16
31	120406	2	"O" RING
32	38765	2	CYLINDER COVER
33	513710	8	TAPTITE SCREW 1/4-20 X 3/4
34	907135	1	RETAINING RING
35	120411	1	"O" RING
36	37897	1	ADJUSTABLE GEAR ROD
37	120411	1	"O" RING
38	120422	1	"O" RING
39	120414	1	BEARING
40	120413	1	SPACER
41	37898	1	SHAFT

TABLE 4. 2PM-5 SERIES METER ASSEMBLY, continued

Item No.	Part No.	Qty.	Description
45	122622	1	ASS'Y-CRANK ARM & PIN
	29801	1	CRANK ARM
	122559	1	PIN
46	512448	1	SOCKET HD. SCREW 1/4-28 X 1"
47	907135	1	RETAINING RING
48	1-122583	AR	.031 WASHER
	2-122583	AR	.015 WASHER
	3-122583	AR	.010 WASHER
49	122621	1	ASS'Y-CROSS HEAD BEARING (INCLUDES REF. NOS. 50 THRU 54)
50	29712	1	ASS'Y-ECC. BUSHING & GEAR
51	2-122558	AR	.010 SPACER
52	122552	2	BEARING
53	1-122558	AR	.015 SPACER
54	907134	1	RETAINING RING
55	1-122583	AR	.031 WASHER
	2-122583	AR	.015 WASHER
	3-122583	AR	.010 WASHER
56	907135	1	RETAINING RING
57	120793	1	"O" RING
58	200549	1	CASE COVER
59	513708	6	TAPTITE SCREW #10-24 X 1/2

TD00425-A
2PM-4, 5 Meter

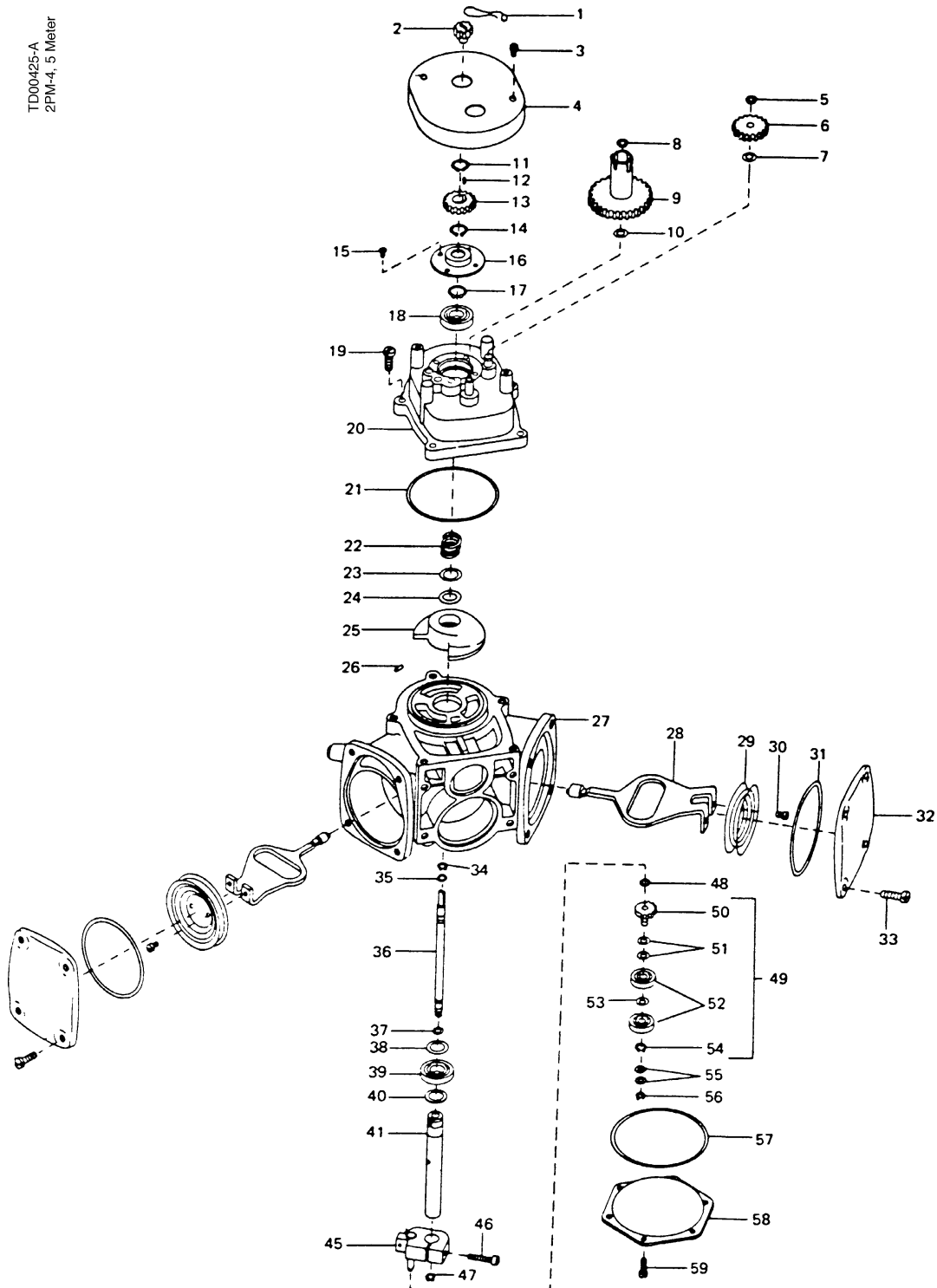


FIGURE 3. 2PM-4 SERIES METER ASSEMBLY

TABLE 5. 2PM-4 SERIES METER ASSEMBLY

Item No.	Part No.	Qty.	Description
1	905410	1	SEAL WIRE
2	28261	1	ADJUSTING KNOB
3	511391	2	PH SCREW #10-32 X 3/8
4	200543	1	GEAR COVER
5	907135	1	RETAINING RING
6	REF.	1	IDLER GEAR (SEE TABLE 6.)
7	1-122583	1	IDLER GEAR WASHER
8	905861	1	RETAINING RING
9	REF.	1	DRIVE GEAR (SEE TABLE 6.)
10	120419	1	DRIVE GEAR WASHER
11	905267	1	RETAINING RING
12	907235	1	SPIROL PIN
13	REF.	1	PINION GEAR (SEE TABLE 6.)
14	905267	1	RETAINING RING
15	507129	4	PH SCREW #10-32 X 3/8
16	29723	1	SHAFT SEAL
17	905267	1	RETAINING RING
18	120414	1	BEARING
19	512122	5	PH SCREW #12-24 X 7/8
20	REF.	1	ASS'Y-DOME (SEE TABLE 6.)
	44722		DOMES
	126481		DRIVE GEAR STUD
	124980		IDLER GEAR STUD
21	126270	1	"O" RING
22	124950	1	VALVE SPRING
23	124951	1	SHIM WASHER
24	120401	1	"O" RING
25	37871	1	VALVE
26	120400	1	VALVE PIN
27	37895	1	ASS'Y-BODY LINING & VALVE SEAT
	512431	2	PLUG 1/8 SOCKET HD.
28	28905	2	ASS'Y-YOKE AND BUSHING
29	200040	2	PISTON
30	513066	4	F.W.H. SCREW #10-32 X 5/16
31	120406	2	"O" RING
32	36904	2	CYLINDER COVER
33	512085	8	PH SCREW 1/4-20 X 3/4
34	907135	1	RETAINING RING
35	120411	1	"O" RING
36	37897	1	ADJUSTABLE GEAR ROD
37	120411	1	"O" RING
38	120422	1	"O" RING
39	120414	1	BEARING
40	120413	1	SPACER
41	37898	1	SHAFT

TABLE 5. 2PM-4 SERIES METER ASSEMBLY, continued

Item No.	Part No.	Qty.	Description
45	122622	1	ASS'Y-CRANK ARM & PIN
	29801		CRANK ARM
	122559		PIN
46	512448	1	SOCKET HD. SCREW 1/4-28 X 1"
47	907135	1	RETAINING RING
48	1-122583	AR	.031 WASHER
	2-122583	AR	.015 WASHER
	3-122583	AR	.010 WASHER
49	122621	1	ASS'Y-CROSS HEAD BEARING (INCLUDES REF. NOS. 50 THRU 54)
50	29712	1	ASS'Y-ECC. BUSHING & GEAR
51	2-122558	AR	.010 SPACER
52	122552	2	BEARING
53	1-122558	AR	.015 SPACER
54	907134	1	RETAINING RING
55	1-122583	AR	.031 WASHER
	2-122583	AR	.015 WASHER
	3-122583	AR	.010 WASHER
56	907135	1	RETAINING RING
57	120793	1	"O" RING
58	28258	1	CASE COVER
59	507086	6	PH SCREW 1/4-28 X 1/2"

TABLE 6. 2PM-4 & 5 SERIES GEARING CHART

Measure	2 PM Meter Model	Gears			Dome Assembly (Item 20)
		Idler (Item 6)	Drive (Item 9)	Pinion (Item 13)	
U. S. Gallons	-3	28263	28257	28260	1-28259
	-4	29906	29914	29907	1-37894
	-5	29906	29914	29907	1-38770
Imperial Gallons	-3C	28263	121563	28260	2-28259
	-4C	200068	200069	124994	2-37894
	-5C	200068	200069	124994	2-38770
Standard Metric	-3E	122156	122158	122157	6-28259
	-4E	200071	200072	200070	3-37894
	-5E	200071	200072	200070	3-38770
Hi-Speed Metric	-3A	28263	122495	122154	3-28259
	-4A	200066	200067	200065	4-37894
	-5A	200066	200067	200065	4-38770
Blending Equipment Models					
U S Gallons	-3D	NONE	122103	122104	5-28259
	-4D		200074	200073	6-37894
	-5D		200074	200073	6-38770
Imperial Gallons	-3F	NONE	122155	122154	5-28259
	-4F		200075	200065	6-37894
	-5F		200075	200065	6-38770
Standard Metric	-3H	NONE	122562	122561	5-28259
	-4H		1-29722	122561	6-37894
	-5H		1-29722	122561	6-38770
Hi-Speed Metric	-3J	NONE	123148	122420	5-28259
	-4J		2-29722	122420	7-37894
	-5J		2-29722	122420	7-38770

WARRANTY AND LIMITATION OF REMEDY AND LIABILITY

Seller warrants that new products and parts of its own design and manufacture when shipped, will be of good quality and will be free from defects in material and workmanship and will conform to applicable specifications. Work, when performed by Seller, will meet applicable work requirements. No warranty is made with respect to used or rebuilt equipment and with respect to products not manufactured by Seller. Seller's only obligation shall be to assign to Buyer, at the time of sale, whatever warranty Seller has received from the manufacturer. Items such as but not limited to lamps, electric motors, hoses, nozzles, hose swivels and safety impact valves are included in the category referred to in the previous sentence. Seller's recommendations with respect to the operation of Seller's equipment are advisory only and are not warranted. All claims under this warranty must be made in writing immediately upon discovery and, in any event, within twenty-four (24) months from date of start-up, if a product is involved, or from completion of the applicable work, if work is involved, or thirty (30) months from date of invoice (whichever shall occur first). (Provided however, that with respect to the Wayne Plus system, 2400 system, DL series dispensers, and card readers, all claims must be made in writing within twelve (12) months from date of start-up. With respect to receipts/totals printers, and any other printers or printing mechanisms, all claims must be made in writing within ninety (90) days from date of start-up. Wayne Vista dispenser external metal panels will be free from defects due to rust and/or corrosion for a period of forty-eight (48) months from date of dispenser start-up.) Defective and nonconforming items must be held for Seller's inspection and returned to the original f.o.b. point upon request. Seller's warranty on service parts, whether new or reconditioned, is ninety (90) days from the date of installation, or twelve (12) months from date of invoice, whichever first occurs. THE FOREGOING IS EXPRESSLY IN LIEU OF ALL OTHER WARRANTIES WHATSOEVER, EXPRESSED, IMPLIED AND STATUTORY, INCLUDING WITHOUT LIMITATIONS, THE IMPLIED WARRANTIES OF MERCHANTABILITY AND FITNESS.

Upon Buyer's submission of a claim as provided above and its substantiation, Seller shall, at its option either (I) repair or replace its product or work at the original f.o.b. point or location of purchase products and/or parts or (II) refund an equitable portion of the purchase price.

THE FOREGOING IS SELLER'S ONLY OBLIGATION AND BUYER'S EXCLUSIVE REMEDY FOR BREACH OF WARRANTY AND, EXCEPT FOR GROSS NEGLIGENCE OR WILLFUL MISCONDUCT, THE FOREGOING IS BUYER'S EXCLUSIVE REMEDY AGAINST SELLER FOR ALL CLAIMS ARISING HEREUNDER OR RELATING HERETO WHETHER SUCH CLAIMS ARE BASED ON BREACH OF CONTRACT, TORT (INCLUDING NEGLIGENCE AND STRICT LIABILITY) OR OTHER THEORIES. BUYER'S FAILURE TO SUBMIT A CLAIM AS PROVIDED ABOVE SHALL SPECIFICALLY WAIVE ALL CLAIMS FOR DAMAGES OR OTHER RELIEF, INCLUDING BUT NOT LIMITED TO CLAIMS BASED ON LATENT DEFECTS. IN NO EVENT SHALL BUYER BE ENTITLED TO INCIDENTAL OR CONSEQUENTIAL DAMAGES. ANY ACTION BY BUYER ARISING HEREUNDER OR RELATING HERETO, WHETHER BASED ON BREACH OF CONTRACT, TORT (INCLUDING NEGLIGENCE AND STRICT LIABILITY) OR OTHER THEORIES, MUST BE COMMENCED WITHIN ONE (1) YEAR AFTER THE CAUSE OF ACTION ACCRUES OR IT SHALL BE BARRED.

"NOTE: This equipment has been tested and found to comply with the limits for a Class A digital device, pursuant to Part 15 of the FCC Rules. These limits are designed to provide reasonable protection against harmful interference when the equipment is operated in a commercial environment. This equipment generates, uses, and can radiate radio frequency energy and, if not installed and used in accordance with the instruction manual, may cause harmful interference to radio communications. Operation of this equipment in a residential area is likely to cause harmful interference in which case the user will be required to correct the interference at his own expense."



Wayne Division, Dresser Industries Inc., P.O. Box 1859, Salisbury, MD 21802-1859, (410) 546-6600
Part No. 913386 Rev. G 6/98 ©1998 Dresser Industries, Inc. 300/6/98



913386 G